



To: Interested Parties  
From: Chris Keating, Keating Research  
Date: December 4, 2019  
Re: Healthier Colorado Poll – November 2019 – Key Findings

---

*This polling data is based on 650 sample live-interviewer telephone survey, 500 in Colorado statewide, plus an oversample of 150 in 22 Western Slope Counties, among active voters in Colorado: 65% conducted on cell-phone and 35% conducted on a land line. The survey was conducted by Keating Research from November 6-9, 2019 and commissioned by Healthier Colorado. Keating Research is recognized by Democrats and Republicans alike as providing extremely accurate polling in Colorado. The worst case margin of error at the 95% level for the statewide sample is plus or minus 4.4%. The worst case margin of error at the 95% level for the West Slope Counties sample is plus or minus 6.7%.*

### **A majority of Coloradans are optimistic about the direction the state is heading.**

A majority - 52% - say Colorado is heading in the right direction (52% right direction – 38% wrong direction). Younger voters age 18-49 are more positive about Colorado (59% right direction – 28% wrong direction) than are older voters age 50+ who are more divided on the direction the state is heading (45% right direction – 47% wrong direction).

### **Michael Bennet and Jared Polis receive positive ratings.**

Presidential candidate and Colorado's senior U.S. Senator Michael Bennet is a net +21 points favorable with Colorado voters (48% favorable – 27% unfavorable). Governor Jared Polis receives similar favorability marks with a net +13 points favorable (49% favorable to 36% unfavorable).

Voters are unfavorable toward Colorado's junior U.S. Senator Cory Gardner who is a net -12 points (33% favorable to 45% unfavorable). Cory Gardner's favorable rating is below that of President Trump who is rated favorably by only 37% of Colorado voters.

### **Nearly half of Coloradans say their healthcare is unaffordable.**

Colorado voters are divided on their feelings about the cost of their healthcare. A majority - 54% - say their healthcare is *affordable*, while the other half (45%) say that the cost of their healthcare is *unaffordable*. In Colorado's West Slope Counties, voters are also divided on healthcare affordability with 49% saying *unaffordable* and 50% saying *affordable*.

Those who are most likely to say that their healthcare is unaffordable include: those who purchase private insurance, paid for out of pocket (64% unaffordable – 35% affordable), younger voters age 18-34 (59% unaffordable – 40% affordable) and families making less than \$100,000 (52% unaffordable – 47% affordable).

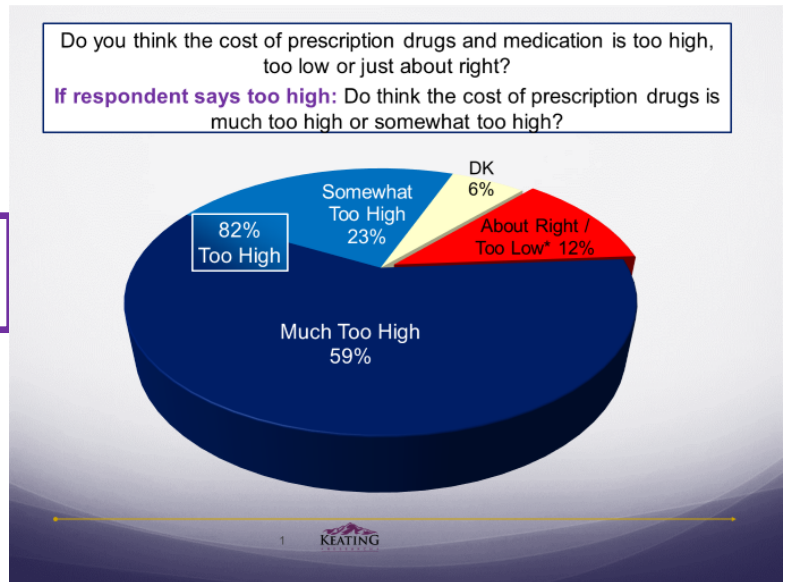
### **Coloradans overwhelmingly say the cost of prescription drugs and medication is too high.**

Americans pay some of the highest prices for prescription drugs - and many Coloradans are struggling with the rising costs of the medication they need.

When Colorado voters are asked to think about the cost of prescription drugs and medication, an overwhelming majority 82% say the costs are *too high*, while only 12% say they are *about right or too low*.

*That's more than a 6-to-1 ratio of those that say costs are too high vs. those who say costs are about right / too low.*

Voters in Colorado's West Slope Counties feel similarly with 84% saying the costs of prescription drugs and medication are *too high* compared to only 9% saying they're *about right or too low*. And this feeling – that prescription drug costs are too high – is unabashedly non-partisan: Democrats (92% costs are too high), Unaffiliated (81% costs are too high) and Republicans (73% costs are too high).



**9-of-10 Coloradans want increased transparency of prescription drug prices.**

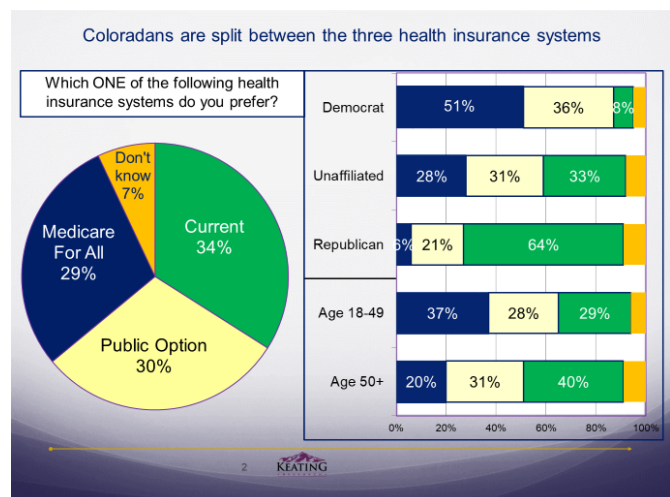
One way to help reduce healthcare costs that Coloradans agree on is making prescription drug prices transparent and open to public scrutiny. An overwhelming majority - 89% - of Colorado voters agree – *The public should have the right to know the costs that are factored into the price of prescription drugs and medications to ensure fair and ethical business practices*, while only 9% disagree. Voters in Colorado's West Slope Counties feel exactly the same way with the lion's share - 90% - agreeing and only 8% disagreeing that the public should have a right to know what goes into the cost of prescription drugs.

**Colorado voters are not content to sit idle with the current health insurance system.**

According to this poll, a majority 55% of Colorado voters believe that Americans under the age of 65 should have the option to purchase health insurance from a plan offered by Medicare, while the minority 37% are against it. Voters in Colorado's West Slope Counties agree - with 54% saying we should have the option to purchase health insurance from a plan offered by Medicare and 37% opposed to it.

In this poll we also asked voters to choose between three different health insurance systems:

- 1) The Current System in which you purchase health insurance through your employer or privately, and enroll in Medicare at age 65;
- 2) The Public Option System, in which you have the option to purchase a plan from Medicare – even if you're under age 65, or continue to purchase health insurance through your employer or privately;
- 3) A Medicare For All System, which establishes a national program where everyone receives their health insurance from a plan like Medicare.



Colorado voters are fairly evenly divided among all three choices: 34% choose the Current System, 30% choose the Public Option System and 29% choose the Medicare For All System. A majority 51% of Democrats prefer the Medicare For All System, while a majority 64% of Republicans prefer the Current System.

## **Polling Methodology**

The Healthier Colorado Voter Poll – November 2019 is based on a sample of 500 respondents in Colorado statewide, plus an oversample of 150 respondents in 22 Western Slope Counties, for a total of 211 respondents in 22 Western Slope Counties. The surveys were conducted by telephone (65% cell-phone interviews and 35% land-line interviews) using live interviewers. The 22 West Slope Counties are Moffat, Routt, Hinsdale, Grand, Summit, La Plata, Montezuma, Dolores, Eagle, Pitkin, Rio Blanco, Garfield, Mesa, Delta, Montrose, Gunnison, Ouray, San Miguel, Saguache, Archuleta, Mineral, and San Juan. All respondents were randomly selected from a list of “active” voters defined as registered voters who voted in November 2016 OR November 2017 OR November 2018 OR November 2019 OR registered to vote since November 2018. The poll was conducted in the field from November 6-9, 2019.



650 active voters: 500 respondents statewide in Colorado, plus an additional 150 respondents in the West Slope Counties. Active voters are registered voters who voted in G16 or G17 or G18 or G19 or registered to vote since G18  
Field: November 6-9, 2019

### Healthier Colorado Poll – November 2019

Hello, I’m calling from **XXX**. I’m not selling anything. We’re doing a survey here in Colorado on some topics that I’m sure you will find interesting.

#### Screener questions

S1. Are you registered to vote in Colorado?

	Statewide [n=500]	West Slope [n=211]
Yes.....	100%	100%

2. Generally speaking, would you say that Colorado is heading in the right direction or in the wrong direction? **If respondent says “I don’t know” ask:** Which way would you lean toward - right direction or wrong direction?

	Statewide [n=500]	West Slope [n=211]
Right direction .....	52%	46%
Wrong direction.....	38%	40%
Don’t know / not sure <b>Don’t read</b> .....	10%	14%

Now I’m going to read the names of some public figures. After I read each one, please tell me if you have a very favorable opinion, somewhat favorable, somewhat unfavorable, or very unfavorable opinion of that person? **Randomize the order.**

	<u>Favorable</u>	<u>Unfavorable</u>	<u>Very Favorable</u>	<u>Somewhat Favorable</u>	<u>Somewhat Unfav</u>	<u>Very Unfav</u>	<u>Don’t know Unfamiliar</u>
3. Jared Polis							
<b>Statewide</b> [n=500] .....	<b>49%</b>	<b>36%</b>	26%	22%	11%	25%	15%
<b>Western Slope</b> [n=211]....	<b>44%</b>	<b>40%</b>	18%	26%	7%	33%	16%
4. Donald Trump							
<b>Statewide</b> [n=500] .....	<b>37%</b>	<b>60%</b>	26%	11%	7%	53%	2%
<b>Western Slope</b> [n=211]....	<b>45%</b>	<b>52%</b>	35%	10%	5%	47%	3%
5. Cory Gardner							
<b>Statewide</b> [n=500] .....	<b>33%</b>	<b>45%</b>	10%	23%	15%	30%	23%
<b>Western Slope</b> [n=211]....	<b>34%</b>	<b>44%</b>	9%	25%	19%	26%	22%
6. Michael Bennet							
<b>Statewide</b> [n=500] .....	<b>48%</b>	<b>27%</b>	16%	32%	14%	13%	25%
<b>Western Slope</b> [n=211]....	<b>43%</b>	<b>30%</b>	12%	30%	16%	14%	27%

7. How affordable is the cost of healthcare to you and your family. Would you say it is very affordable, somewhat affordable, somewhat unaffordable or very unaffordable?

	Statewide [n=500]	West Slope [n=211]
<b>AFFORDABLE</b> .....	<b>54%</b>	<b>50%</b>
<b>UNAFFORDABLE</b> .....	<b>45%</b>	<b>49%</b>
Very affordable .....	21%	18%
Somewhat affordable .....	33%	32%
Somewhat unaffordable.....	23%	23%
Very unaffordable.....	21%	26%
Don't know / not sure <b>Don't read</b> .....	2%	2%

8. Currently, only Americans who are age 65 and over can enroll in Medicare and receive full benefits under Medicare. Do you think that Americans under the age of 65 should also have the option to purchase a health insurance plan offered by Medicare, or not?

	Statewide [n=500]	West Slope [n=211]
Yes, should have the option .....	55%	54%
No, should not .....	37%	37%
Don't know / not sure <b>Don't read</b> .....	9%	9%

9. Which ONE of the following health insurance systems do you prefer? **Do not randomize the choices.**

**If respondent says I don't know, none or all of them ask:** If you had to choose, which ONE would you lean toward?

	Statewide [n=500]	West Slope [n=211]
Keep the Current System in which you purchase health insurance through your employer or privately, and enroll in Medicare at age 65 .....	34%	35%
A Public Option System in which you have the option to purchase a plan from Medicare - even if you're under age 65, or continue to purchase health insurance through your employer or privately .....	30%	31%
A Medicare for All System which establishes a national program, where everyone receives their health insurance from a plan like Medicare .....	29%	27%
Don't know / not sure <b>Don't read</b> .....	7%	7%

10. Do you think the cost of prescription drugs and medication is too high, too low or just about right? **If respondent says too high:** Do think the cost of prescription drugs is much too high or somewhat too high?

	<b>Statewide</b> <i>[n=500]</i>	<b>West Slope</b> <i>[n=211]</i>
<b>TOO HIGH</b> .....	<b>82%</b>	<b>84%</b>
Much too high .....	59%	59%
Somewhat too high.....	16%	17%
Too high – but not sure how much .....	7%	8%
About right.....	12%	9%
Too low .....	*%	--
Don't know / not sure <b>Don't read</b> .....	6%	8%

11. Please tell me if you agree or disagree with the following statement. The public should have the right to know the costs that are factored into the price of prescription drugs and medications to ensure fair and ethical business practices?

**If respondent says agree ask:** Do you strongly or somewhat agree with the statement?

**If respondent says disagree ask:** Do you strongly or somewhat disagree with the statement?

	<b>Statewide</b> <i>[n=500]</i>	<b>West Slope</b> <i>[n=211]</i>
<b>AGREE</b> .....	<b>89%</b>	<b>90%</b>
<b>DISAGREE</b> .....	<b>9%</b>	<b>8%</b>
Agree – Strongly .....	74%	72%
Agree – Somewhat .....	15%	18%
Disagree – Strongly.....	5%	5%
Disagree – Somewhat .....	4%	3%
Don't know / not sure <b>Don't read</b> .....	2%	3%

**Demographic questions**

And finally, just a few questions for statistical purposes only...

**Gender.**

	<b>Statewide</b> <i>[n=500]</i>	<b>West Slope</b> <i>[n=211]</i>
Male.....	48%	49%
Female.....	52%	51%

**AGE.** Could you please tell me your age?

	<b>Statewide</b> <i>[n=500]</i>	<b>West Slope</b> <i>[n=211]</i>
18-24.....	7%	4%
25-29.....	8%	6%
30-34.....	10%	11%
35-39.....	8%	8%
40-44.....	9%	6%
45-49.....	9%	10%
50-54.....	7%	3%
55-59.....	8%	11%
60-64.....	10%	14%
65-69.....	8%	10%
70+.....	16%	16%

**Education.** What is the last grade or level of school you have completed?

	<b>Statewide</b> <i>[n=500]</i>	<b>West Slope</b> <i>[n=211]</i>
Less than high school degree.....	1%	1%
High school graduate.....	10%	18%
Some college / 2 year degree / Associates degree.....	29%	25%
College graduate / BA or BS degree.....	37%	40%
Postgraduate courses / Masters or Doctoral degree.....	24%	16%
Don't know / refused <b>Don't read</b> .....	*%	*%

**Income.** Could you please tell me if your family’s total income is? [Read categories.](#)

	<b>Statewide</b> <i>[n=500]</i>	<b>West Slope</b> <i>[n=211]</i>
Under \$25,000.....	5%	9%
\$25,000 up to \$50,000 .....	12%	17%
\$50,000 up to \$75,000 .....	21%	16%
\$75,000 up to \$100,000 .....	16%	18%
\$100,000 up to \$150,000 .....	18%	12%
\$150,000 or more.....	17%	14%
Don't know / Not sure <b>Don't read</b> .....	2%	4%
Refused <b>Don't read</b> .....	8%	10%

**Children.** Do you have any children age 19 or younger, or not?

	<b>Statewide</b> <i>[n=500]</i>	<b>West Slope</b> <i>[n=211]</i>
Yes, have children age 19 or younger .....	35%	24%
No, do not have any children age 19 or younger .....	63%	75%
Don't know / refused <b>Don't read</b> .....	2%	1%

**Health Insurance.** Which of the following best describes your primary health insurance? [Read categories until respondent answers.](#)

	<b>Statewide</b> <i>[n=500]</i>	<b>West Slope</b> <i>[n=211]</i>
Employer provided health insurance .....	52%	35%
Private health insurance, paid for out of pocket .....	13%	23%
Medicare.....	20%	24%
Medicaid .....	4%	6%
No health insurance, uninsured .....	4%	5%
Other <b>Don't read</b> .....	5%	7%
Don't know / refused <b>Don't read</b> .....	2%	1%



**Ethnicity.** Just to be sure we are representing everybody, do you happen to come from a Hispanic or Latino background? **If respondent says “no”, ask: May I ask your race? Do not read answer choices.**

	<b>Statewide</b> [n=500]	<b>West Slope</b> [n=211]
Hispanic / Latino .....	10%	6%
White .....	78%	84%
Black / African American .....	3%	1%
Asian .....	1%	1%
Native American / American Indian .....	1%	2%
Other <b>Don't read</b> .....	4%	4%
Don't know / refused <b>Don't read</b> .....	3%	3%

**Party Registration**

	<b>Statewide</b> [n=500]	<b>West Slope</b> [n=211]
Democrat .....	31%	26%
Unaffiliated .....	38%	37%
Republican .....	30%	36%
Other.....	1%	1%

**Survey Methodology**

The Healthier Colorado Voter Poll – November 2019 is based on a sample of 500 respondents in Colorado statewide, plus an oversample of 150 respondents in 22 Western Slope Counties, for a total of 211 respondents in 22 Western Slope Counties. The surveys were conducted by telephone (65% cell-phone interviews and 35% land-line interviews) using live interviewers.

The 22 West Slope Counties are Moffat, Routt, Hinsdale, Grand, Summit, La Plata, Montezuma, Dolores, Eagle, Pitkin, Rio Blanco, Garfield, Mesa, Delta, Montrose, Gunnison, Ouray, San Miguel, Saguache, Archuleta, Mineral, and San Juan.

All respondents were randomly selected from a list of “active” voters defined as registered voters who voted in November 2016 OR November 2017 OR November 2018 OR November 2019 OR registered to vote since November 2018. The poll was conducted in the field from November 6-9, 2019.

The worst case margin of error at the 95% level for the statewide sample of 500 is plus or minus 4.4%. The worst case margin of error at the 95% level for the West Slope Counties sample of 211 is plus or minus 6.7%. Keating Research conducted this poll on behalf of Healthier Colorado.

Healthier Colorado Poll - November 2019

S1. Are you registered to vote in Colorado?

	PartyRegistration				Party Registration / Gender						Party Registration / Age						Ethnicity	
	All Voters	Demo- crat	Unaf/ Other	Repub lican	Dem Men	Dem Women	Unaf Men	Unaf Women	Rep Men	Rep Women	Dem 18-49	Dem 50+	Una 18-49	Una 50+	Rep 18-49	Rep 50+	White	Hisp- anic
Total Answering	500 100%	157 31%	189 38%	148 30%	62 12%	95 19%	98 20%	91 18%	76 15%	73 15%	87 17%	70 14%	115 23%	74 15%	51 10%	97 19%	392 78%	48 10%
Yes	100%	100%	100%	100%	100%	100%	100%	100%	100%	100%	100%	100%	100%	100%	100%	100%	100%	100%
No	-	-	-	-	-	-	-	-	-	-	-	-	-	-	-	-	-	-
Don' t know / not sure (Don' t read)	-	-	-	-	-	-	-	-	-	-	-	-	-	-	-	-	-	-

Healthier Colorado Poll - November 2019

S1. Are you registered to vote in Colorado?

	Gender		Age 2		Age 4				Gender / Age				Colorado Regions					
	All Voters	Men	Women	18-49	50+	18-34	35-49	50-64	65+	Men 18-49	Men 50+	Women 18-49	Women 50+	Den/ Bldr/ Broom	Arap/ Jeff	Adam/ Doug/ Larm/ Weld	CO Sprng TV	*Full* Sample West Slope
Total Answering	500 100%	240 48%	260 52%	257 51%	243 49%	128 26%	129 26%	126 25%	117 23%	131 26%	110 22%	126 25%	133 27%	95 19%	112 22%	142 28%	83 17%	211 42%
Yes	100%	100%	100%	100%	100%	100%	100%	100%	100%	100%	100%	100%	100%	100%	100%	100%	100%	100%
No	-	-	-	-	-	-	-	-	-	-	-	-	-	-	-	-	-	-
Don' t know / not sure (Don' t read)	-	-	-	-	-	-	-	-	-	-	-	-	-	-	-	-	-	-

Healthier Colorado Poll - November 2019

S1. Are you registered to vote in Colorado?

	Have Children		Education		Education / Gender				Income			Health Insurance Provider			
	ALL VOTERS	Yes	No	Less Than BA	BA+	Men NoBA	Men BA+	Women NoBA	Women BA+	Less Than \$50k	\$50k up to \$100k	\$100k or More	Empl -oyer	Priv -ate	Medi -care
Total Answering	500 100%	175 35%	316 63%	197 39%	301 60%	94 19%	146 29%	103 21%	155 31%	88 18%	183 37%	178 36%	260 52%	64 13%	100 20%
Yes	100%	100%	100%	100%	100%	100%	100%	100%	100%	100%	100%	100%	100%	100%	100%
No	-	-	-	-	-	-	-	-	-	-	-	-	-	-	-
Don' t know / not sure (Don' t read)	-	-	-	-	-	-	-	-	-	-	-	-	-	-	-

Healthier Colorado Poll - November 2019

Q2. Generally speaking, would you say that Colorado is heading in the right direction or in the wrong direction?

	PartyRegistration				Party Registration / Gender						Party Registration / Age						Ethnicity	
	All Voters	Democrat	Unaf/Other	Republican	Dem Men	Dem Women	Unaf Men	Unaf Women	Rep Men	Rep Women	Dem 18-49	Dem 50+	Unaf 18-49	Unaf 50+	Rep 18-49	Rep 50+	White	Hispanic
Total Answering	500 100%	157 31%	189 38%	148 30%	62 12%	95 19%	98 20%	91 18%	76 15%	73 15%	87 17%	70 14%	115 23%	74 15%	51 10%	97 19%	392 78%	48 10%
Right direction	52%	83%	51%	21%	84%	83%	47%	55%	14%	28%	83%	84%	55%	45%	26%	18%	51%	59%
Wrong direction	38%	8%	36%	71%	7%	8%	43%	28%	75%	66%	7%	8%	31%	44%	58%	77%	39%	27%
Don't know / not sure (Don't read)	10%	9%	13%	8%	9%	9%	9%	16%	12%	5%	10%	8%	14%	11%	15%	5%	10%	15%

Healthier Colorado Poll - November 2019

Q2. Generally speaking, would you say that Colorado is heading in the right direction or in the wrong direction?

	Gender		Age 2		Age 4				Gender / Age				Colorado Regions					
	All Voters	Men	Women	18-49	50+	18-34	35-49	50-64	65+	Men 18-49	Men 50+	Women 18-49	Women 50+	Den/ Bldr/ Broom	Arap/ Jeff	Adam/ Doug/ Larm/ Weld	CO Sprng TV	*Full* Sample West Slope
Total Answering	500 100%	240 48%	260 52%	257 51%	243 49%	128 26%	129 26%	126 25%	117 23%	131 26%	110 22%	126 25%	133 27%	95 19%	112 22%	142 28%	83 17%	211 42%
Right direction	52%	46%	58%	59%	45%	63%	54%	49%	41%	55%	36%	63%	53%	70%	51%	49%	42%	46%
Wrong direction	38%	44%	32%	28%	47%	22%	35%	46%	48%	34%	56%	23%	40%	22%	34%	43%	49%	40%
Don' t know / not sure (Don' t read)	10%	10%	10%	13%	7%	15%	11%	5%	10%	12%	8%	14%	7%	7%	15%	7%	9%	14%

Healthier Colorado Poll - November 2019

Q2. Generally speaking, would you say that Colorado is heading in the right direction or in the wrong direction?

	Have Children		Education		Education / Gender				Income			Health Insurance Provider			
	ALL VOTERS	Yes	No	Less Than BA	BA+	Men NoBA	Men BA+	Women NoBA	Women BA+	Less Than \$50k	\$50k up to \$100k	\$100k or More	Empl-oyer	Priv-ate	Medi-care
Total Answering	500 100%	175 35%	316 63%	197 39%	301 60%	94 19%	146 29%	103 21%	155 31%	88 18%	183 37%	178 36%	260 52%	64 13%	100 20%
Right direction	52%	56%	50%	44%	58%	35%	53%	51%	62%	54%	56%	52%	59%	49%	40%
Wrong direction	38%	36%	39%	44%	33%	54%	37%	36%	30%	34%	35%	39%	34%	37%	49%
Don't know / not sure (Don't read)	10%	8%	11%	12%	9%	10%	10%	13%	8%	12%	8%	9%	8%	15%	11%

Healthier Colorado Poll - November 2019

Q3. [Jared Polis] Now I'm going to read the names of some public figures. After I read each one, please tell me if you have a very favorable opinion, somewhat favorable, somewhat unfavorable, or very unfavorable opinion of that person?

	PartyRegistration				Party Registration / Gender						Party Registration / Age						Ethnicity	
	All Voters	Demo- crat	Unaf/ Other	Repub lican	Dem Men	Dem Women	Unaf Men	Unaf Women	Rep Men	Rep Women	Dem 18-49	Dem 50+	Una 18-49	Una 50+	Rep 18-49	Rep 50+	White	Hisp- anic
Total Answering	500 100%	157 31%	189 38%	148 30%	62 12%	95 19%	98 20%	91 18%	76 15%	73 15%	87 17%	70 14%	115 23%	74 15%	51 10%	97 19%	392 78%	48 10%
FAVORABLE	49%	82%	47%	17%	81%	82%	48%	46%	12%	21%	81%	83%	46%	49%	15%	18%	48%	61%
UNFAVORABLE	36%	8%	38%	64%	7%	8%	44%	31%	71%	57%	10%	5%	36%	41%	67%	62%	37%	29%
Very Favorable	26%	54%	19%	7%	53%	54%	19%	20%	5%	8%	48%	61%	21%	16%	7%	6%	27%	23%
Somewhat Favorable	22%	28%	27%	10%	28%	28%	29%	26%	8%	13%	33%	22%	24%	32%	8%	11%	21%	38%
Somewhat Unfavorable	11%	4%	17%	12%	3%	5%	16%	18%	10%	14%	7%	2%	16%	18%	15%	11%	11%	17%
Very Unfavorable	25%	4%	21%	52%	4%	3%	28%	13%	60%	43%	4%	3%	20%	23%	53%	51%	26%	13%
Don't know / Unfamiliar	15%	10%	16%	20%	12%	9%	8%	24%	17%	22%	9%	12%	19%	11%	18%	20%	15%	10%



## Healthier Colorado Poll - November 2019

Q3. [Jared Polis] Now I'm going to read the names of some public figures. After I read each one, please tell me if you have a very favorable opinion, somewhat favorable, somewhat unfavorable, or very unfavorable opinion of that person?

	Gender		Age 2		Age 4				Gender / Age				Colorado Regions					
	All Voters	Men	Women	18-49	50+	18-34	35-49	50-64	65+	Men 18-49	Men 50+	Women 18-49	Women 50+	Den/ Bldr/ Broom	Arap/ Jeff	Adam/ Doug/ Larm/ Weld	CO Sprng TV	*Full* Sample West Slope
Total Answering	500 100%	240 48%	260 52%	257 51%	243 49%	128 26%	129 26%	126 25%	117 23%	131 26%	110 22%	126 25%	133 27%	95 19%	112 22%	142 28%	83 17%	211 42%
FAVORABLE	49%	44%	52%	51%	46%	49%	53%	50%	42%	47%	41%	55%	50%	71%	49%	41%	38%	44%
UNFAVORABLE	36%	43%	30%	33%	39%	29%	37%	39%	39%	38%	49%	29%	31%	17%	35%	45%	42%	40%
Very Favorable	26%	23%	29%	27%	25%	25%	30%	29%	21%	25%	21%	30%	29%	40%	29%	25%	17%	18%
Somewhat Favorable	22%	21%	23%	24%	21%	23%	24%	21%	21%	22%	21%	25%	21%	32%	20%	16%	21%	26%
Somewhat Unfavorable	11%	10%	12%	12%	10%	13%	12%	12%	8%	11%	9%	14%	11%	3%	13%	16%	15%	7%
Very Unfavorable	25%	32%	18%	21%	29%	16%	25%	28%	31%	26%	40%	15%	21%	14%	23%	29%	27%	33%
Don't know / Unfamiliar	15%	13%	18%	16%	15%	22%	9%	11%	19%	15%	10%	16%	19%	12%	16%	14%	20%	16%

## Healthier Colorado Poll - November 2019

Q3. [Jared Polis] Now I'm going to read the names of some public figures. After I read each one, please tell me if you have a very favorable opinion, somewhat favorable, somewhat unfavorable, or very unfavorable opinion of that person?

	ALL VOTERS	Have Children		Education		Education / Gender				Income			Health Insurance Provider		
		Yes	No	Less Than BA	BA+	Men NoBA	Men BA+	Women NoBA	Women BA+	Less Than \$50k	\$50k up to \$100k	\$100k or More	Empl -oyer	Priv -ate	Medi -care
Total Answering	500 100%	175 35%	316 63%	197 39%	301 60%	94 19%	146 29%	103 21%	155 31%	88 18%	183 37%	178 36%	260 52%	64 13%	100 20%
FAVORABLE	49%	51%	47%	36%	57%	28%	55%	43%	58%	48%	53%	49%	54%	47%	42%
UNFAVORABLE	36%	37%	36%	41%	33%	56%	34%	27%	32%	25%	34%	40%	35%	39%	42%
Very Favorable	26%	26%	26%	19%	31%	14%	28%	22%	33%	27%	29%	24%	30%	27%	22%
Somewhat Favorable	22%	25%	21%	17%	26%	13%	27%	21%	25%	22%	23%	25%	24%	21%	20%
Somewhat Unfavorable	11%	10%	12%	14%	10%	16%	7%	12%	12%	6%	12%	11%	11%	17%	10%
Very Unfavorable	25%	27%	24%	27%	24%	41%	27%	14%	20%	19%	22%	29%	23%	22%	32%
Don't know / Unfamiliar	15%	12%	16%	23%	10%	16%	11%	30%	10%	27%	13%	11%	11%	14%	16%

Healthier Colorado Poll - November 2019

Q4. [Donald Trump] Now I'm going to read the names of some public figures. After I read each one, please tell me if you have a very favorable opinion, somewhat favorable, somewhat unfavorable, or very unfavorable opinion of that person?

	PartyRegistration				Party Registration / Gender						Party Registration / Age						Ethnicity	
	All Voters	Demo- crat	Unaf/ Other	Repub lican	Dem Men	Dem Women	Unaf Men	Unaf Women	Rep Men	Rep Women	Dem 18-49	Dem 50+	Una 18-49	Una 50+	Rep 18-49	Rep 50+	White	Hisp- anic
Total Answering	500 100%	157 31%	189 38%	148 30%	62 12%	95 19%	98 20%	91 18%	76 15%	73 15%	87 17%	70 14%	115 23%	74 15%	51 10%	97 19%	392 78%	48 10%
FAVORABLE	37%	3%	32%	79%	5%	2%	39%	26%	81%	77%	2%	5%	27%	41%	76%	81%	39%	26%
UNFAVORABLE	60%	95%	64%	18%	91%	97%	60%	68%	15%	22%	97%	92%	69%	56%	19%	18%	58%	72%
Very Favorable	26%	1%	19%	59%	*%	2%	24%	14%	61%	58%	1%	2%	16%	25%	49%	65%	27%	14%
Somewhat Favorable	11%	2%	13%	20%	5%	*%	14%	11%	20%	19%	1%	3%	11%	16%	27%	16%	12%	13%
Somewhat Unfavorable	7%	6%	9%	7%	9%	3%	7%	11%	4%	10%	7%	4%	9%	8%	11%	5%	7%	5%
Very Unfavorable	53%	89%	55%	11%	82%	94%	53%	57%	11%	12%	90%	88%	60%	48%	8%	13%	51%	68%
(Don't read) Don't know / Unfamiliar	3%	2%	4%	3%	4%	1%	2%	6%	4%	2%	2%	3%	5%	3%	5%	1%	3%	2%

Healthier Colorado Poll - November 2019

Q4. [Donald Trump] Now I'm going to read the names of some public figures. After I read each one, please tell me if you have a very favorable opinion, somewhat favorable, somewhat unfavorable, or very unfavorable opinion of that person?

	Gender		Age 2		Age 4				Gender / Age				Colorado Regions					
	All Voters	Men	Women	18-49	50+	18-34	35-49	50-64	65+	Men 18-49	Men 50+	Women 18-49	Women 50+	Den/ Bldr/ Broom	Arap/ Jeff	Adam/ Doug/ Larm/ Weld	CO Sprng TV	*Full* Sample West Slope
Total Answering	500 100%	240 48%	260 52%	257 51%	243 49%	128 26%	129 26%	126 25%	117 23%	131 26%	110 22%	126 25%	133 27%	95 19%	112 22%	142 28%	83 17%	211 42%
FAVORABLE	37%	43%	31%	28%	47%	23%	32%	47%	47%	34%	54%	22%	40%	14%	36%	45%	43%	45%
UNFAVORABLE	60%	54%	66%	68%	51%	71%	66%	52%	50%	61%	45%	75%	57%	82%	59%	53%	55%	52%
Very Favorable	26%	30%	22%	17%	34%	15%	20%	31%	38%	22%	38%	12%	31%	10%	25%	28%	32%	35%
Somewhat Favorable	11%	14%	9%	11%	12%	8%	13%	15%	9%	12%	16%	9%	9%	4%	11%	18%	10%	10%
Somewhat Unfavorable	7%	6%	8%	9%	6%	11%	6%	6%	5%	7%	5%	10%	6%	6%	7%	8%	10%	5%
Very Unfavorable	53%	47%	58%	60%	46%	59%	60%	46%	45%	54%	40%	65%	51%	77%	52%	45%	45%	47%
(Don't read) Don't know / Unfamiliar	3%	3%	3%	4%	2%	6%	2%	1%	3%	5%	1%	3%	3%	4%	5%	1%	3%	3%

Healthier Colorado Poll - November 2019

Q4. [Donald Trump] Now I'm going to read the names of some public figures. After I read each one, please tell me if you have a very favorable opinion, somewhat favorable, somewhat unfavorable, or very unfavorable opinion of that person?

	ALL VOTERS	Have Children		Education		Education / Gender				Income			Health Insurance Provider		
		Yes	No	Less Than BA	BA+	Men NoBA	Men BA+	Women NoBA	Women BA+	Less Than \$50k	\$50k up to \$100k	\$100k or More	Empl -oyer	Priv -ate	Medi -care
Total Answering	500 100%	175 35%	316 63%	197 39%	301 60%	94 19%	146 29%	103 21%	155 31%	88 18%	183 37%	178 36%	260 52%	64 13%	100 20%
FAVORABLE	37%	31%	41%	43%	33%	56%	35%	32%	31%	35%	32%	38%	30%	45%	45%
UNFAVORABLE	60%	65%	57%	53%	65%	41%	62%	63%	67%	62%	66%	59%	67%	50%	54%
Very Favorable	26%	18%	30%	33%	21%	43%	21%	23%	21%	27%	23%	23%	19%	30%	33%
Somewhat Favorable	11%	13%	11%	10%	12%	12%	15%	9%	10%	8%	9%	15%	11%	14%	12%
Somewhat Unfavorable	7%	8%	7%	10%	6%	8%	5%	11%	6%	12%	8%	5%	7%	5%	7%
Very Unfavorable	53%	57%	51%	43%	59%	33%	57%	52%	61%	50%	58%	54%	60%	45%	46%
(Don't read) Don't know / Unfamiliar	3%	3%	2%	4%	2%	4%	3%	5%	1%	2%	2%	3%	3%	5%	1%

Healthier Colorado Poll - November 2019

Q5. [Cory Gardner] Now I'm going to read the names of some public figures. After I read each one, please tell me if you have a very favorable opinion, somewhat favorable, somewhat unfavorable, or very unfavorable opinion of that person?

	PartyRegistration				Party Registration / Gender						Party Registration / Age						Ethnicity	
	All Voters	Demo- crat	Unaf/ Other	Repub lican	Dem Men	Dem Women	Unaf Men	Unaf Women	Rep Men	Rep Women	Dem 18-49	Dem 50+	Una 18-49	Una 50+	Rep 18-49	Rep 50+	White	Hisp- anic
Total Answering	500 100%	157 31%	189 38%	148 30%	62 12%	95 19%	98 20%	91 18%	76 15%	73 15%	87 17%	70 14%	115 23%	74 15%	51 10%	97 19%	392 78%	48 10%
FAVORABLE	33%	14%	31%	55%	21%	10%	38%	23%	57%	52%	11%	18%	27%	36%	50%	57%	34%	32%
UNFAVORABLE	45%	72%	41%	21%	64%	78%	44%	37%	20%	21%	72%	73%	39%	43%	13%	25%	44%	43%
Very Favorable	10%	3%	6%	21%	5%	2%	7%	6%	21%	21%	2%	5%	3%	11%	16%	24%	11%	8%
Somewhat Favorable	23%	11%	24%	34%	16%	8%	31%	17%	36%	31%	10%	13%	24%	25%	34%	34%	23%	24%
Somewhat Unfavorable	15%	15%	17%	11%	15%	14%	19%	15%	14%	9%	16%	13%	14%	23%	10%	12%	14%	21%
Very Unfavorable	30%	58%	23%	9%	49%	64%	25%	22%	6%	13%	56%	60%	25%	20%	2%	13%	30%	22%
(Don't read) Don't know / Unfamiliar	23%	13%	29%	24%	15%	12%	18%	40%	23%	26%	16%	9%	34%	21%	38%	17%	21%	25%

Healthier Colorado Poll - November 2019

Q5. [Cory Gardner] Now I'm going to read the names of some public figures. After I read each one, please tell me if you have a very favorable opinion, somewhat favorable, somewhat unfavorable, or very unfavorable opinion of that person?

	Gender		Age 2		Age 4				Gender / Age				Colorado Regions					
	All Voters	Men	Women	18-49	50+	18-34	35-49	50-64	65+	Men 18-49	Men 50+	Women 18-49	Women 50+	Den/ Bldr/ Broom	Arap/ Jeff	Adam/ Doug/ Larm/ Weld	CO Sprng TV	*Full* Sample West Slope
Total Answering	500 100%	240 48%	260 52%	257 51%	243 49%	128 26%	129 26%	126 25%	117 23%	131 26%	110 22%	126 25%	133 27%	95 19%	112 22%	142 28%	83 17%	211 42%
FAVORABLE	33%	39%	26%	26%	39%	26%	27%	38%	41%	35%	45%	18%	35%	22%	33%	40%	29%	34%
UNFAVORABLE	45%	42%	48%	45%	45%	39%	50%	47%	43%	39%	45%	51%	45%	61%	42%	40%	42%	44%
Very Favorable	10%	11%	9%	5%	14%	6%	4%	10%	19%	8%	15%	3%	14%	6%	9%	11%	12%	9%
Somewhat Favorable	23%	28%	18%	21%	25%	20%	22%	27%	22%	27%	30%	15%	21%	15%	24%	29%	17%	25%
Somewhat Unfavorable	15%	16%	13%	14%	15%	15%	13%	17%	14%	14%	19%	13%	13%	14%	15%	13%	17%	19%
Very Unfavorable	30%	25%	35%	31%	29%	24%	37%	30%	29%	25%	26%	37%	32%	47%	27%	27%	24%	26%
(Don't read) Don't know / Unfamiliar	23%	19%	26%	29%	16%	35%	23%	16%	16%	26%	10%	32%	20%	17%	25%	20%	29%	22%

## Healthier Colorado Poll - November 2019

Q5. [Cory Gardner] Now I'm going to read the names of some public figures. After I read each one, please tell me if you have a very favorable opinion, somewhat favorable, somewhat unfavorable, or very unfavorable opinion of that person?

	ALL VOTERS	Have Children		Education		Education / Gender				Income			Health Insurance Provider		
		Yes	No	Less Than BA	BA+	Men NoBA	Men BA+	Women NoBA	Women BA+	Less Than \$50k	\$50k up to \$100k	\$100k or More	Empl -oyer	Priv -ate	Medi -care
Total Answering	500 100%	175 35%	316 63%	197 39%	301 60%	94 19%	146 29%	103 21%	155 31%	88 18%	183 37%	178 36%	260 52%	64 13%	100 20%
FAVORABLE	33%	28%	35%	34%	32%	44%	36%	25%	28%	29%	32%	35%	30%	31%	42%
UNFAVORABLE	45%	50%	42%	38%	50%	31%	49%	44%	50%	42%	47%	47%	50%	36%	40%
Very Favorable	10%	3%	13%	9%	10%	10%	12%	8%	9%	11%	9%	9%	5%	7%	22%
Somewhat Favorable	23%	25%	22%	25%	21%	34%	24%	17%	19%	18%	22%	26%	25%	24%	20%
Somewhat Unfavorable	15%	16%	14%	13%	16%	14%	18%	12%	14%	16%	14%	17%	17%	11%	10%
Very Unfavorable	30%	34%	29%	25%	34%	17%	30%	31%	37%	27%	34%	31%	33%	25%	30%
(Don't read) Don't know / Unfamiliar	23%	22%	22%	28%	19%	25%	15%	32%	22%	28%	21%	18%	20%	33%	18%



Healthier Colorado Poll - November 2019

Q6. [Michael Bennet] Now I'm going to read the names of some public figures. After I read each one, please tell me if you have a very favorable opinion, somewhat favorable, somewhat unfavorable, or very unfavorable opinion of that person?

	PartyRegistration				Party Registration / Gender						Party Registration / Age						Ethnicity	
	All Voters	Democrat	Unaf/Other	Republican	Dem Men	Dem Women	Unaf Men	Unaf Women	Rep Men	Rep Women	Dem 18-49	Dem 50+	Una 18-49	Una 50+	Rep 18-49	Rep 50+	White	Hispanic
Total Answering	500 100%	157 31%	189 38%	148 30%	62 12%	95 19%	98 20%	91 18%	76 15%	73 15%	87 17%	70 14%	115 23%	74 15%	51 10%	97 19%	392 78%	48 10%
FAVORABLE	48%	73%	47%	26%	68%	75%	52%	41%	24%	28%	66%	81%	48%	45%	16%	31%	48%	57%
UNFAVORABLE	27%	8%	25%	49%	5%	10%	35%	15%	50%	47%	8%	8%	19%	35%	42%	52%	28%	25%
Very Favorable	16%	33%	12%	4%	30%	35%	15%	8%	3%	6%	20%	49%	10%	13%	2%	5%	17%	18%
Somewhat Favorable	32%	39%	35%	22%	38%	40%	37%	33%	21%	22%	45%	32%	38%	32%	14%	26%	31%	39%
Somewhat Unfavorable	14%	5%	16%	20%	5%	6%	23%	8%	16%	25%	5%	6%	12%	23%	22%	19%	14%	18%
Very Unfavorable	13%	3%	9%	28%	-	4%	11%	7%	34%	22%	3%	2%	8%	12%	20%	33%	13%	7%
(Don't read) Don't know / Unfamiliar	25%	20%	28%	25%	27%	15%	13%	44%	26%	25%	27%	11%	33%	20%	42%	17%	24%	18%

Healthier Colorado Poll - November 2019

Q6. [Michael Bennet] Now I'm going to read the names of some public figures. After I read each one, please tell me if you have a very favorable opinion, somewhat favorable, somewhat unfavorable, or very unfavorable opinion of that person?

	Gender		Age 2		Age 4				Gender / Age				Colorado Regions					
	All Voters	Men	Women	18-49	50+	18-34	35-49	50-64	65+	Men 18-49	Men 50+	Women 18-49	Women 50+	Den/ Bldr/ Broom	Arap/ Jeff	Adam/ Doug/ Larm/ Weld	CO Sprng TV	*Full* Sample West Slope
Total Answering	500 100%	240 48%	260 52%	257 51%	243 49%	128 26%	129 26%	126 25%	117 23%	131 26%	110 22%	126 25%	133 27%	95 19%	112 22%	142 28%	83 17%	211 42%
FAVORABLE	48%	47%	50%	47%	50%	42%	52%	48%	51%	45%	50%	50%	50%	64%	45%	49%	41%	43%
UNFAVORABLE	27%	32%	23%	20%	34%	17%	23%	32%	36%	24%	42%	17%	28%	17%	30%	27%	31%	30%
Very Favorable	16%	15%	17%	12%	20%	11%	13%	17%	24%	10%	21%	15%	20%	22%	19%	13%	13%	12%
Somewhat Favorable	32%	32%	32%	35%	30%	32%	38%	31%	28%	35%	29%	35%	30%	42%	26%	36%	28%	30%
Somewhat Unfavorable	14%	16%	12%	11%	17%	9%	14%	16%	17%	12%	20%	10%	14%	10%	17%	12%	15%	16%
Very Unfavorable	13%	16%	11%	9%	18%	8%	10%	16%	19%	11%	21%	6%	15%	7%	14%	15%	16%	14%
(Don't read) Don't know / Unfamiliar	25%	21%	28%	33%	16%	41%	25%	19%	13%	32%	9%	34%	22%	19%	25%	24%	28%	27%

Healthier Colorado Poll - November 2019

Q6. [Michael Bennet] Now I'm going to read the names of some public figures. After I read each one, please tell me if you have a very favorable opinion, somewhat favorable, somewhat unfavorable, or very unfavorable opinion of that person?

	ALL VOTERS	Have Children		Education		Education / Gender				Income			Health Insurance Provider		
		Yes	No	Less Than BA	BA+	Men NoBA	Men BA+	Women NoBA	Women BA+	Less Than \$50k	\$50k up to \$100k	\$100k or More	Empl -oyer	Priv -ate	Medi -care
Total Answering	500 100%	175 35%	316 63%	197 39%	301 60%	94 19%	146 29%	103 21%	155 31%	88 18%	183 37%	178 36%	260 52%	64 13%	100 20%
FAVORABLE	48%	50%	48%	42%	52%	40%	52%	44%	53%	40%	54%	49%	53%	41%	45%
UNFAVORABLE	27%	24%	29%	28%	26%	36%	29%	21%	24%	32%	23%	30%	23%	26%	37%
Very Favorable	16%	11%	19%	13%	17%	11%	17%	15%	18%	20%	15%	14%	15%	13%	24%
Somewhat Favorable	32%	39%	29%	29%	35%	29%	35%	29%	35%	20%	39%	35%	39%	27%	21%
Somewhat Unfavorable	14%	11%	16%	13%	14%	13%	18%	13%	11%	19%	12%	14%	12%	13%	18%
Very Unfavorable	13%	12%	14%	15%	12%	23%	11%	8%	13%	12%	10%	16%	10%	13%	19%
(Don't read) Don't know / Unfamiliar	25%	26%	23%	29%	21%	24%	19%	35%	23%	28%	24%	22%	24%	33%	18%

Healthier Colorado Poll - November 2019

Q7. How affordable is the cost of healthcare to you and your family. Would you say it is very affordable, somewhat affordable, somewhat unaffordable or very unaffordable?

	PartyRegistration				Party Registration / Gender						Party Registration / Age						Ethnicity	
	All Voters	Democrat	Unaf/Other	Republican	Dem Men	Dem Women	Unaf Men	Unaf Women	Rep Men	Rep Women	Dem 18-49	Dem 50+	Unaf 18-49	Unaf 50+	Rep 18-49	Rep 50+	White	Hispanic
Total Answering	500 100%	157 31%	189 38%	148 30%	62 12%	95 19%	98 20%	91 18%	76 15%	73 15%	87 17%	70 14%	115 23%	74 15%	51 10%	97 19%	392 78%	48 10%
AFFORDABLE	54%	55%	49%	59%	54%	55%	51%	47%	58%	61%	47%	64%	39%	65%	53%	63%	53%	58%
UNAFFORDABLE	45%	44%	49%	39%	42%	45%	47%	51%	42%	35%	51%	34%	59%	34%	47%	35%	45%	40%
Very affordable	21%	19%	17%	27%	15%	22%	19%	15%	25%	29%	14%	26%	12%	26%	22%	30%	21%	22%
Somewhat affordable	33%	35%	32%	32%	40%	33%	32%	32%	32%	32%	33%	38%	27%	40%	31%	33%	32%	36%
Somewhat unaffordable	23%	24%	24%	21%	26%	23%	22%	25%	23%	20%	27%	21%	28%	16%	19%	23%	23%	23%
Very unaffordable	21%	20%	26%	18%	16%	22%	25%	26%	20%	15%	25%	13%	31%	18%	28%	12%	22%	17%
Don' t know / not sure (Don' t read)	2%	2%	2%	2%	4%	-	2%	1%	-	4%	1%	2%	2%	1%	-	3%	2%	2%

Healthier Colorado Poll - November 2019

Q7. How affordable is the cost of healthcare to you and your family. Would you say it is very affordable, somewhat affordable, somewhat unaffordable or very unaffordable?

	Gender		Age 2		Age 4				Gender / Age				Colorado Regions					
	All Voters	Men	Women	18-49	50+	18-34	35-49	50-64	65+	Men 18-49	Men 50+	Women 18-49	Women 50+	Den/ Bldr/ Broom	Arap/ Jeff	Adam/ Doug/ Larm/ Weld	CO Sprng TV	*Full* Sample West Slope
Total Answering	500 100%	240 48%	260 52%	257 51%	243 49%	128 26%	129 26%	126 25%	117 23%	131 26%	110 22%	126 25%	133 27%	95 19%	112 22%	142 28%	83 17%	211 42%
AFFORDABLE	54%	54%	54%	44%	64%	40%	48%	53%	76%	45%	64%	43%	64%	56%	55%	53%	54%	50%
UNAFFORDABLE	45%	44%	45%	55%	34%	59%	50%	47%	21%	53%	34%	56%	34%	42%	45%	45%	44%	49%
Very affordable	21%	20%	21%	14%	27%	12%	17%	19%	36%	15%	26%	14%	28%	12%	26%	24%	23%	18%
Somewhat affordable	33%	34%	32%	30%	36%	28%	31%	33%	40%	30%	38%	29%	35%	44%	29%	29%	31%	32%
Somewhat unaffordable	23%	23%	23%	26%	20%	30%	22%	29%	11%	27%	19%	26%	20%	26%	28%	21%	18%	23%
Very unaffordable	21%	21%	22%	28%	14%	29%	28%	18%	10%	27%	15%	30%	14%	16%	17%	24%	26%	26%
Don' t know / not sure (Don' t read)	2%	2%	1%	1%	2%	1%	2%	1%	3%	2%	2%	1%	2%	2%	-	2%	3%	2%

Healthier Colorado Poll - November 2019

Q7. How affordable is the cost of healthcare to you and your family. Would you say it is very affordable, somewhat affordable, somewhat unaffordable or very unaffordable?

	Have Children		Education		Education / Gender				Income			Health Insurance Provider			
	ALL VOTRS	Yes	No	Less Than BA	BA+	Men NoBA	Men BA+	Women NoBA	Women BA+	Less Than \$50k	\$50k up to \$100k	\$100k or More	Empl -oyer	Priv -ate	Medi -care
Total Answering	500 100%	175 35%	316 63%	197 39%	301 60%	94 19%	146 29%	103 21%	155 31%	88 18%	183 37%	178 36%	260 52%	64 13%	100 20%
AFFORDABLE	54%	47%	57%	48%	57%	53%	54%	44%	60%	49%	46%	61%	55%	35%	75%
UNAFFORDABLE	45%	52%	41%	50%	42%	45%	44%	54%	39%	50%	53%	37%	45%	64%	21%
Very affordable	21%	14%	25%	17%	23%	15%	23%	19%	23%	18%	19%	23%	18%	10%	37%
Somewhat affordable	33%	33%	33%	32%	34%	38%	31%	26%	37%	31%	26%	38%	37%	25%	38%
Somewhat unaffordable	23%	25%	22%	25%	22%	24%	23%	26%	21%	26%	32%	16%	28%	33%	10%
Very unaffordable	21%	27%	19%	25%	20%	21%	21%	28%	18%	24%	21%	21%	17%	31%	12%
Don' t know / not sure (Don' t read)	2%	1%	2%	2%	1%	2%	2%	2%	1%	1%	1%	1%	*%	2%	4%

Healthier Colorado Poll - November 2019

Q8. Currently, only Americans who are age 65 and over can enroll in Medicare and receive full benefits under Medicare. Do you think that Americans under the age of 65 should also have the option to purchase a health insurance plan offered by Medicare, or not?

	PartyRegistration				Party Registration / Gender						Party Registration / Age						Ethnicity	
	All Voters	Democrat	Unaf/Other	Republican	Dem Men	Dem Women	Unaf Men	Unaf Women	Rep Men	Rep Women	Dem 18-49	Dem 50+	Unaf 18-49	Unaf 50+	Rep 18-49	Rep 50+	White	Hispanic
Total Answering	500 100%	157 31%	189 38%	148 30%	62 12%	95 19%	98 20%	91 18%	76 15%	73 15%	87 17%	70 14%	115 23%	74 15%	51 10%	97 19%	392 78%	48 10%
Yes, should have the option	55%	81%	55%	26%	81%	81%	54%	56%	25%	26%	87%	73%	59%	48%	30%	24%	52%	63%
No, should not	37%	11%	34%	67%	13%	10%	38%	30%	67%	67%	8%	15%	29%	43%	65%	68%	40%	24%
Don't know / not sure (Don't read)	9%	8%	11%	7%	6%	9%	8%	14%	8%	6%	5%	12%	12%	9%	5%	8%	8%	13%

Healthier Colorado Poll - November 2019

Q8. Currently, only Americans who are age 65 and over can enroll in Medicare and receive full benefits under Medicare. Do you think that Americans under the age of 65 should also have the option to purchase a health insurance plan offered by Medicare, or not?

	Gender		Age 2		Age 4				Gender / Age				Colorado Regions					
	All Voters	Men	Women	18-49	50+	18-34	35-49	50-64	65+	Men 18-49	Men 50+	Women 18-49	Women 50+	Den/ Bldr/ Broom	Arap/ Jeff	Adam/ Doug/ Larm/ Weld	CO Sprng TV	*Full* Sample West Slope
Total Answering	500 100%	240 48%	260 52%	257 51%	243 49%	128 26%	129 26%	126 25%	117 23%	131 26%	110 22%	126 25%	133 27%	95 19%	112 22%	142 28%	83 17%	211 42%
Yes, should have the option	55%	52%	57%	63%	45%	69%	58%	49%	42%	59%	43%	67%	47%	71%	57%	49%	45%	54%
No, should not	37%	40%	33%	29%	45%	21%	36%	44%	47%	33%	50%	24%	41%	24%	37%	38%	42%	37%
Don' t know / not sure (Don' t read)	9%	7%	10%	8%	10%	10%	6%	8%	11%	8%	7%	9%	12%	5%	6%	13%	13%	9%



Healthier Colorado Poll - November 2019

Q8. Currently, only Americans who are age 65 and over can enroll in Medicare and receive full benefits under Medicare. Do you think that Americans under the age of 65 should also have the option to purchase a health insurance plan offered by Medicare, or not?

	ALL VOTERS	Have Children		Education		Education / Gender				Income			Health Insurance Provider		
		Yes	No	Less Than BA	BA+	Men NoBA	Men BA+	Women NoBA	Women BA+	Less Than \$50k	\$50k up to \$100k	\$100k or More	Empl -oyer	Priv -ate	Medi -care
Total Answering	500 100%	175 35%	316 63%	197 39%	301 60%	94 19%	146 29%	103 21%	155 31%	88 18%	183 37%	178 36%	260 52%	64 13%	100 20%
Yes, should have the option	55%	59%	53%	56%	54%	53%	52%	58%	56%	68%	57%	51%	60%	51%	40%
No, should not	37%	34%	38%	37%	36%	41%	40%	34%	32%	29%	30%	42%	30%	40%	47%
Don' t know / not sure (Don' t read)	9%	8%	9%	7%	10%	6%	8%	8%	12%	3%	13%	6%	10%	9%	13%

Healthier Colorado Poll - November 2019

Q9. Which ONE of the following health insurance systems do you prefer? (READ) If respondent says I don't know, none or all of them ask: If you had to choose, which ONE would you lean toward?

	PartyRegistration				Party Registration / Gender						Party Registration / Age						Ethnicity	
	All Voters	Demo- crat	Unaf/ Other	Repub lican	Dem Men	Dem Women	Unaf Men	Unaf Women	Rep Men	Rep Women	Dem 18-49	Dem 50+	Una 18-49	Una 50+	Rep 18-49	Rep 50+	White	Hisp- anic
Total Answering	500 100%	157 31%	189 38%	148 30%	62 12%	95 19%	98 20%	91 18%	76 15%	73 15%	87 17%	70 14%	115 23%	74 15%	51 10%	97 19%	392 78%	48 10%
Keep the Current System in which you purchase health insurance through your employer or privately, and enroll in Medicare	34%	8%	33%	64%	9%	7%	40%	27%	63%	65%	6%	11%	30%	39%	70%	61%	36%	32%
A Public Option System in which you have the option to purchase a plan from Medicare - even if you're under age 65, or	30%	36%	31%	21%	36%	36%	27%	35%	24%	17%	30%	43%	30%	33%	21%	21%	29%	24%
A Medicare for All System which establishes a national program, where everyone receives their health insurance from a pl	29%	51%	28%	6%	50%	52%	28%	29%	4%	8%	64%	35%	33%	21%	1%	9%	28%	33%
Don't know / not sure (Don't read)	7%	5%	8%	9%	5%	5%	6%	9%	8%	10%	-	11%	8%	6%	8%	9%	6%	11%

Healthier Colorado Poll - November 2019

Q9. Which ONE of the following health insurance systems do you prefer? (READ) If respondent says I don't know, none or all of them ask: If you had to choose, which ONE would you lean toward?

	Gender		Age 2		Age 4				Gender / Age				Colorado Regions					
	All Voters	Men	Women	18-49	50+	18-34	35-49	50-64	65+	Men 18-49	Men 50+	Women 18-49	Women 50+	Den/ Bldr/ Broom	Arap/ Jeff	Adam/ Doug/ Larm/ Weld	CO Sprng TV	*Full* Sample West Slope
Total Answering	500 100%	240 48%	260 52%	257 51%	243 49%	128 26%	129 26%	126 25%	117 23%	131 26%	110 22%	126 25%	133 27%	95 19%	112 22%	142 28%	83 17%	211 42%
Keep the Current System in which you purchase health insurance through your employer or privately, and enroll in Medicare	34%	39%	30%	29%	40%	26%	33%	37%	43%	36%	42%	22%	38%	21%	33%	41%	41%	35%
A Public Option System in which you have the option to purchase a plan from Medicare - even if you're under age 65, or	30%	29%	30%	28%	31%	29%	28%	38%	23%	23%	35%	34%	27%	39%	27%	30%	21%	31%
A Medicare for All System which establishes a national program, where everyone receives their health insurance from a pl	29%	26%	31%	37%	20%	41%	33%	20%	20%	35%	15%	39%	24%	33%	33%	23%	30%	27%
Don't know / not sure (Don't read)	7%	6%	8%	5%	9%	4%	6%	4%	14%	5%	8%	6%	10%	6%	8%	6%	8%	7%

Healthier Colorado Poll - November 2019

Q9. Which ONE of the following health insurance systems do you prefer? (READ) If respondent says I don't know, none or all of them ask: If you had to choose, which ONE would you lean toward?

	ALL VOTERS	Have Children		Education		Education / Gender				Income			Health Insurance Provider		
		Yes	No	Less Than BA	BA+	Men NoBA	Men BA+	Women NoBA	Women BA+	Less Than \$50k	\$50k up to \$100k	\$100k or More	Empl -oyer	Priv -ate	Medi -care
Total Answering	500 100%	175 35%	316 63%	197 39%	301 60%	94 19%	146 29%	103 21%	155 31%	88 18%	183 37%	178 36%	260 52%	64 13%	100 20%
Keep the Current System in which you purchase health insurance through your employer or privately, and enroll in Medicaid	34%	29%	37%	37%	33%	44%	35%	31%	30%	30%	28%	41%	32%	37%	38%
A Public Option System in which you have the option to purchase a plan from Medicaid - even if you're under age 65, or	30%	34%	28%	23%	34%	23%	33%	24%	34%	24%	32%	33%	33%	33%	22%
A Medicare for All System which establishes a national program, where everyone receives their health insurance from a pl	29%	31%	28%	30%	28%	26%	26%	34%	30%	37%	37%	21%	31%	23%	26%
Don't know / not sure (Don't read)	7%	6%	7%	9%	5%	7%	6%	11%	5%	9%	4%	5%	4%	7%	14%

Healthier Colorado Poll - November 2019

Q10. Do you think the cost of prescription drugs and medication is too high, too low or just about right? If respondent says too high: Do think the cost of prescription drugs is much too high or somewhat too high?

	PartyRegistration				Party Registration / Gender						Party Registration / Age						Ethnicity	
	All Voters	Demo- crat	Unaf/ Other	Repub lican	Dem Men	Dem Women	Unaf Men	Unaf Women	Rep Men	Rep Women	Dem 18-49	Dem 50+	Una 18-49	Una 50+	Rep 18-49	Rep 50+	White	Hisp- anic
Total Answering	500 100%	157 31%	189 38%	148 30%	62 12%	95 19%	98 20%	91 18%	76 15%	73 15%	87 17%	70 14%	115 23%	74 15%	51 10%	97 19%	392 78%	48 10%
TOO HIGH	82%	92%	81%	73%	90%	93%	78%	83%	72%	73%	89%	95%	85%	75%	64%	77%	82%	77%
Much too high	59%	71%	56%	50%	63%	75%	57%	55%	49%	51%	74%	67%	57%	54%	47%	52%	58%	58%
Somewhat too high	16%	12%	19%	16%	12%	12%	16%	22%	20%	13%	9%	15%	20%	17%	13%	18%	17%	15%
Too high – but not sure how much	7%	9%	6%	6%	15%	6%	5%	7%	3%	9%	6%	13%	8%	4%	4%	7%	7%	5%
About right	12%	4%	14%	20%	2%	6%	15%	12%	20%	19%	4%	4%	11%	17%	25%	17%	13%	11%
Too low	*%	-	-	1%	-	-	-	-	2%	-	-	-	-	-	2%	-	-	-
Don't know / not sure (Don't read)	6%	4%	6%	7%	8%	1%	7%	5%	6%	8%	7%	1%	4%	9%	9%	6%	5%	12%

Healthier Colorado Poll - November 2019

Q10. Do you think the cost of prescription drugs and medication is too high, too low or just about right? If respondent says too high: Do think the cost of prescription drugs is much too high or somewhat too high?

	Gender		Age 2		Age 4				Gender / Age				Colorado Regions					
	All Voters	Men	Women	18-49	50+	18-34	35-49	50-64	65+	Men 18-49	Men 50+	Women 18-49	Women 50+	Den/ Bldr/ Broom	Arap/ Jeff	Adam/ Doug/ Larm/ Weld	CO Sprng TV	*Full* Sample West Slope
Total Answering	500 100%	240 48%	260 52%	257 51%	243 49%	128 26%	129 26%	126 25%	117 23%	131 26%	110 22%	126 25%	133 27%	95 19%	112 22%	142 28%	83 17%	211 42%
TOO HIGH	82%	79%	84%	82%	82%	82%	82%	82%	81%	77%	82%	87%	82%	86%	74%	82%	84%	84%
Much too high	59%	56%	61%	60%	57%	57%	64%	55%	59%	56%	56%	65%	58%	64%	53%	56%	62%	59%
Somewhat too high	16%	16%	16%	15%	17%	16%	15%	18%	16%	14%	19%	16%	15%	16%	15%	19%	14%	17%
Too high – but not sure how much	7%	7%	7%	6%	8%	10%	3%	10%	6%	7%	7%	5%	8%	7%	6%	7%	8%	8%
About right	12%	13%	12%	12%	13%	14%	9%	11%	15%	14%	12%	9%	14%	8%	18%	11%	15%	9%
Too low	*%	*%	-	*%	-	1%	-	-	-	1%	-	-	-	-	1%	-	-	-
Don' t know / not sure (Don' t read)	6%	7%	4%	6%	5%	3%	9%	6%	4%	8%	6%	4%	5%	5%	7%	7%	1%	8%

Healthier Colorado Poll - November 2019

Q10. Do you think the cost of prescription drugs and medication is too high, too low or just about right? If respondent says too high: Do think the cost of prescription drugs is much too high or somewhat too high?

	ALL VOTERS	Have Children		Education		Education / Gender				Income			Health Insurance Provider		
		Yes	No	Less Than BA	BA+	Men NoBA	Men BA+	Women NoBA	Women BA+	Less Than \$50k	\$50k up to \$100k	\$100k or More	Empl -oyer	Priv -ate	Medi -care
Total Answering	500 100%	175 35%	316 63%	197 39%	301 60%	94 19%	146 29%	103 21%	155 31%	88 18%	183 37%	178 36%	260 52%	64 13%	100 20%
TOO HIGH	82%	84%	82%	83%	81%	82%	78%	84%	85%	83%	84%	81%	84%	77%	82%
Much too high	59%	58%	59%	61%	57%	61%	53%	61%	61%	67%	61%	53%	58%	57%	58%
Somewhat too high	16%	18%	15%	15%	17%	16%	17%	14%	17%	13%	14%	21%	17%	15%	18%
Too high – but not sure how much	7%	7%	7%	7%	7%	5%	8%	8%	6%	4%	9%	7%	8%	5%	6%
About right	12%	10%	13%	11%	13%	11%	14%	11%	12%	10%	11%	11%	10%	17%	13%
Too low	*%	-	*%	1%	-	1%	-	-	-	-	-	1%	-	-	-
Don' t know / not sure (Don' t read)	6%	6%	5%	6%	6%	6%	8%	5%	4%	6%	4%	6%	6%	6%	5%

Healthier Colorado Poll - November 2019

Q11. Please tell me if you agree or disagree with the following statement. The public should have the right to know the costs that are factored into the price of prescription drugs and medications to ensure fair and ethical business practices?

	PartyRegistration				Party Registration / Gender						Party Registration / Age						Ethnicity	
	All Voters	Democrat	Unaf/Other	Republican	Dem Men	Dem Women	Unaf Men	Unaf Women	Rep Men	Rep Women	Dem 18-49	Dem 50+	Unaf 18-49	Unaf 50+	Rep 18-49	Rep 50+	White	Hispanic
Total Answering	500 100%	157 31%	189 38%	148 30%	62 12%	95 19%	98 20%	91 18%	76 15%	73 15%	87 17%	70 14%	115 23%	74 15%	51 10%	97 19%	392 78%	48 10%
AGREE	89%	96%	88%	83%	97%	96%	88%	88%	75%	91%	100%	92%	92%	81%	85%	82%	89%	90%
DISAGREE	9%	2%	9%	15%	3%	2%	10%	9%	23%	7%	-	5%	6%	13%	13%	16%	9%	6%
Agree – Strongly	74%	86%	71%	64%	86%	86%	70%	71%	56%	73%	91%	80%	77%	61%	62%	65%	74%	70%
Agree – Somewhat	15%	10%	17%	19%	11%	10%	17%	16%	19%	19%	9%	12%	14%	20%	23%	16%	16%	20%
Disagree – Strongly	5%	-	5%	8%	-	-	7%	4%	15%	2%	-	-	4%	7%	13%	6%	5%	-
Disagree – Somewhat	4%	2%	4%	7%	3%	2%	3%	5%	8%	5%	-	5%	2%	7%	-	10%	4%	6%
Don't know / not sure (Don't read)	2%	1%	3%	2%	-	2%	3%	4%	2%	2%	-	3%	2%	6%	2%	2%	2%	4%



Healthier Colorado Poll - November 2019

Q11. Please tell me if you agree or disagree with the following statement. The public should have the right to know the costs that are factored into the price of prescription drugs and medications to ensure fair and ethical business practices?

	Gender		Age 2		Age 4				Gender / Age				Colorado Regions					
	All Voters	Men	Women	18-49	50+	18-34	35-49	50-64	65+	Men 18-49	Men 50+	Women 18-49	Women 50+	Den/ Bldr/ Broom	Arap/ Jeff	Adam/ Doug/ Larm/ Weld	CO Sprng TV	*Full* Sample West Slope
Total Answering	500 100%	240 48%	260 52%	257 51%	243 49%	128 26%	129 26%	126 25%	117 23%	131 26%	110 22%	126 25%	133 27%	95 19%	112 22%	142 28%	83 17%	211 42%
AGREE	89%	86%	92%	93%	84%	95%	91%	86%	82%	91%	79%	95%	88%	95%	86%	85%	89%	90%
DISAGREE	9%	12%	6%	6%	12%	3%	8%	13%	12%	8%	18%	3%	8%	3%	11%	12%	8%	8%
Agree – Strongly	74%	70%	77%	79%	68%	78%	80%	70%	66%	76%	63%	83%	72%	83%	72%	71%	70%	72%
Agree – Somewhat	15%	16%	15%	14%	16%	17%	11%	16%	16%	16%	16%	13%	16%	12%	14%	14%	19%	18%
Disagree – Strongly	5%	8%	2%	4%	5%	2%	7%	5%	5%	7%	9%	2%	1%	1%	7%	7%	1%	5%
Disagree – Somewhat	4%	5%	4%	1%	8%	1%	1%	8%	7%	1%	9%	1%	6%	2%	4%	5%	7%	3%
Don't know / not sure (Don't read)	2%	2%	3%	1%	4%	1%	1%	2%	6%	1%	3%	1%	4%	2%	3%	3%	3%	3%

Healthier Colorado Poll - November 2019

Q11. Please tell me if you agree or disagree with the following statement. The public should have the right to know the costs that are factored into the price of prescription drugs and medications to ensure fair and ethical business practices?

	ALL VOTRS	Have Children		Education		Education / Gender				Income			Health Insurance Provider		
		Yes	No	Less Than BA	BA+	Men NoBA	Men BA+	Women NoBA	Women BA+	Less Than \$50k	\$50k up to \$100k	\$100k or More	Empl -oyer	Priv -ate	Medi -care
Total Answering	500 100%	175 35%	316 63%	197 39%	301 60%	94 19%	146 29%	103 21%	155 31%	88 18%	183 37%	178 36%	260 52%	64 13%	100 20%
AGREE	89%	91%	88%	87%	90%	85%	86%	89%	94%	89%	90%	88%	90%	91%	82%
DISAGREE	9%	8%	10%	10%	8%	13%	12%	7%	5%	9%	9%	10%	8%	8%	12%
Agree – Strongly	74%	78%	71%	68%	78%	66%	72%	70%	83%	75%	75%	74%	75%	76%	68%
Agree – Somewhat	15%	12%	16%	19%	12%	19%	14%	19%	11%	14%	15%	14%	15%	15%	15%
Disagree – Strongly	5%	3%	5%	5%	4%	9%	7%	1%	2%	5%	3%	7%	4%	8%	5%
Disagree – Somewhat	4%	4%	4%	5%	4%	4%	5%	6%	3%	5%	6%	3%	5%	*%	7%
Don't know / not sure (Don't read)	2%	2%	3%	3%	2%	2%	2%	4%	2%	2%	2%	2%	2%	1%	6%

Healthier Colorado Poll - November 2019

Gender:

	PartyRegistration				Party Registration / Gender						Party Registration / Age						Ethnicity	
	All Voters	Democrat	Unaf/Other	Republican	Dem Men	Dem Women	Unaf Men	Unaf Women	Rep Men	Rep Women	Dem 18-49	Dem 50+	Unaf 18-49	Unaf 50+	Rep 18-49	Rep 50+	White	Hispanic
Total Answering	500 100%	157 31%	189 38%	148 30%	62 12%	95 19%	98 20%	91 18%	76 15%	73 15%	87 17%	70 14%	115 23%	74 15%	51 10%	97 19%	392 78%	48 10%
Male	48%	40%	52%	51%	100%	-	100%	-	100%	-	44%	34%	52%	52%	60%	46%	48%	39%
Female	52%	60%	48%	49%	-	100%	-	100%	-	100%	56%	66%	48%	48%	40%	54%	52%	61%

Healthier Colorado Poll - November 2019

Gender:

	Gender		Age 2		Age 4				Gender / Age				Colorado Regions					
	All Voters	Men	Women	18-49	50+	18-34	35-49	50-64	65+	Men 18-49	Men 50+	Women 18-49	Women 50+	Den/ Bldr/ Broom	Arap/ Jeff	Adam/ Doug/ Larm/ Weld	CO Sprng TV	*Full* Sample West Slope
Total Answering	500 100%	240 48%	260 52%	257 51%	243 49%	128 26%	129 26%	126 25%	117 23%	131 26%	110 22%	126 25%	133 27%	95 19%	112 22%	142 28%	83 17%	211 42%
Male	48%	100%	-	51%	45%	49%	53%	51%	39%	100%	100%	-	-	49%	51%	50%	41%	49%
Female	52%	-	100%	49%	55%	51%	47%	49%	61%	-	-	100%	100%	51%	49%	50%	59%	51%

Healthier Colorado Poll - November 2019

Gender:

	Have Children		Education		Education / Gender				Income			Health Insurance Provider			
	ALL VOTRS	Yes	No	Less Than BA	BA+	Men NoBA	Men BA+	Women NoBA	Women BA+	Less Than \$50k	\$50k up to \$100k	\$100k or More	Empl-oyer	Priv-ate	Medi-care
Total Answering	500 100%	175 35%	316 63%	197 39%	301 60%	94 19%	146 29%	103 21%	155 31%	88 18%	183 37%	178 36%	260 52%	64 13%	100 20%
Male	48%	47%	48%	48%	49%	100%	100%	-	-	43%	44%	51%	50%	45%	43%
Female	52%	53%	52%	52%	51%	-	-	100%	100%	57%	56%	49%	50%	55%	57%

Healthier Colorado Poll - November 2019

AGE. Could you please tell me your age?

	PartyRegistration				Party Registration / Gender						Party Registration / Age						Ethnicity	
	All Voters	Democrat	Unaf/Other	Republican	Dem Men	Dem Women	Unaf Men	Unaf Women	Rep Men	Rep Women	Dem 18-49	Dem 50+	Unaf 18-49	Unaf 50+	Rep 18-49	Rep 50+	White	Hispanic
Total Answering	500 100%	157 31%	189 38%	148 30%	62 12%	95 19%	98 20%	91 18%	76 15%	73 15%	87 17%	70 14%	115 23%	74 15%	51 10%	97 19%	392 78%	48 10%
18-24	7%	6%	10%	4%	4%	7%	11%	9%	8%	-	10%	-	16%	-	13%	-	7%	3%
25-29	8%	10%	9%	5%	9%	10%	9%	9%	4%	7%	17%	-	15%	-	15%	-	7%	15%
30-34	10%	11%	13%	6%	12%	9%	10%	17%	8%	4%	19%	-	22%	-	18%	-	12%	5%
35-39	8%	13%	8%	5%	17%	11%	9%	6%	6%	3%	24%	-	13%	-	13%	-	7%	16%
40-44	9%	11%	10%	5%	12%	11%	11%	10%	6%	3%	20%	-	17%	-	13%	-	8%	11%
45-49	9%	5%	10%	10%	7%	4%	10%	10%	8%	11%	9%	-	17%	-	28%	-	8%	9%
50-54	7%	7%	7%	7%	7%	7%	7%	6%	7%	8%	-	16%	-	17%	-	11%	8%	2%
55-59	8%	6%	8%	12%	4%	7%	5%	12%	14%	10%	-	13%	-	20%	-	19%	8%	7%
60-64	10%	9%	10%	10%	9%	8%	13%	7%	15%	5%	-	19%	-	27%	-	16%	11%	*%
65-69	8%	8%	5%	11%	9%	7%	5%	4%	8%	14%	-	17%	-	13%	-	16%	7%	15%
70+	16%	16%	9%	25%	10%	19%	9%	9%	16%	34%	-	35%	-	23%	-	38%	16%	17%

Healthier Colorado Poll - November 2019

AGE. Could you please tell me your age?

	Gender		Age 2		Age 4				Gender / Age				Colorado Regions					
	All Voters	Men	Women	18-49	50+	18-34	35-49	50-64	65+	Men 18-49	Men 50+	Women 18-49	Women 50+	Den/ Bldr/ Broom	Arap/ Jeff	Adam/ Doug/ Larm/ Weld	CO Sprng TV	*Full* Sample West Slope
Total Answering	500 100%	240 48%	260 52%	257 51%	243 49%	128 26%	129 26%	126 25%	117 23%	131 26%	110 22%	126 25%	133 27%	95 19%	112 22%	142 28%	83 17%	211 42%
18-24	7%	9%	6%	14%	-	27%	-	-	-	16%	-	11%	-	6%	11%	7%	6%	4%
25-29	8%	8%	9%	16%	-	32%	-	-	-	14%	-	18%	-	9%	6%	9%	11%	6%
30-34	10%	10%	11%	20%	-	41%	-	-	-	18%	-	22%	-	12%	8%	13%	7%	11%
35-39	8%	10%	7%	16%	-	-	33%	-	-	19%	-	14%	-	12%	10%	7%	7%	8%
40-44	9%	9%	8%	17%	-	-	34%	-	-	17%	-	17%	-	14%	13%	8%	1%	6%
45-49	9%	9%	8%	17%	-	-	33%	-	-	16%	-	17%	-	8%	7%	7%	13%	10%
50-54	7%	7%	7%	-	14%	-	-	28%	-	-	15%	-	14%	5%	6%	8%	12%	3%
55-59	8%	7%	10%	-	17%	-	-	34%	-	-	16%	-	19%	7%	5%	10%	9%	11%
60-64	10%	13%	7%	-	20%	-	-	39%	-	-	28%	-	14%	7%	12%	8%	9%	14%
65-69	8%	8%	8%	-	16%	-	-	-	33%	-	17%	-	15%	7%	8%	9%	4%	10%
70+	16%	11%	20%	-	32%	-	-	-	67%	-	25%	-	38%	12%	13%	15%	20%	16%

Healthier Colorado Poll - November 2019

AGE. Could you please tell me your age?

	Have Children		Education		Education / Gender				Income			Health Insurance Provider			
	ALL VOTERS	Yes	No	Less Than BA	BA+	Men NoBA	Men BA+	Women NoBA	Women BA+	Less Than \$50k	\$50k up to \$100k	\$100k or More	Empl-oyer	Priv-ate	Medi-care
Total Answering	500 100%	175 35%	316 63%	197 39%	301 60%	94 19%	146 29%	103 21%	155 31%	88 18%	183 37%	178 36%	260 52%	64 13%	100 20%
18-24	7%	2%	10%	12%	4%	13%	6%	11%	2%	7%	8%	4%	8%	8%	-
25-29	8%	8%	8%	11%	6%	14%	3%	9%	9%	11%	10%	3%	8%	8%	2%
30-34	10%	20%	5%	6%	13%	4%	14%	8%	13%	7%	11%	13%	16%	9%	-
35-39	8%	18%	3%	5%	11%	7%	12%	3%	9%	7%	10%	9%	12%	5%	2%
40-44	9%	19%	3%	5%	11%	6%	11%	4%	11%	7%	7%	13%	13%	8%	1%
45-49	9%	11%	7%	6%	10%	8%	10%	5%	10%	8%	6%	13%	10%	13%	1%
50-54	7%	11%	5%	8%	6%	9%	5%	7%	7%	2%	6%	12%	9%	7%	-
55-59	8%	4%	11%	9%	8%	5%	9%	12%	8%	5%	9%	11%	10%	13%	4%
60-64	10%	5%	12%	10%	10%	15%	11%	5%	8%	8%	12%	7%	10%	12%	6%
65-69	8%	*%	12%	9%	6%	8%	7%	10%	6%	13%	7%	6%	2%	4%	29%
70+	16%	1%	24%	18%	14%	11%	12%	25%	16%	24%	15%	9%	2%	13%	54%



Healthier Colorado Poll - November 2019

Education. What is the last grade or level of school you have completed? Read list if necessary

	PartyRegistration				Party Registration / Gender						Party Registration / Age						Ethnicity	
	All Voters	Demo- crat	Unaf/ Other	Repub lican	Dem Men	Dem Women	Unaf Men	Unaf Women	Rep Men	Rep Women	Dem 18-49	Dem 50+	Una 18-49	Una 50+	Rep 18-49	Rep 50+	White	Hisp- anic
Total Answering	500 100%	157 31%	189 38%	148 30%	62 12%	95 19%	98 20%	91 18%	76 15%	73 15%	87 17%	70 14%	115 23%	74 15%	51 10%	97 19%	392 78%	48 10%
Less than high school degree	1%	*%	1%	*%	-	1%	-	2%	*%	*%	-	1%	-	3%	-	*%	*%	4%
High school graduate	10%	9%	10%	10%	7%	10%	9%	11%	10%	10%	9%	9%	10%	10%	9%	11%	9%	13%
Some college / 2 year degree / Associates degree	29%	25%	27%	37%	24%	25%	27%	26%	40%	34%	22%	28%	22%	34%	42%	34%	30%	21%
College graduate / BA or BS degree	37%	38%	40%	31%	43%	36%	39%	40%	32%	29%	45%	31%	42%	36%	33%	30%	37%	37%
Postgraduate courses / Masters or Doctoral degree	24%	27%	22%	21%	27%	28%	25%	20%	17%	25%	25%	31%	26%	17%	16%	24%	24%	21%
Don' t know / refused (Don' t read)	*%	-	1%	1%	-	-	*%	1%	-	1%	-	-	1%	*%	-	1%	*%	4%

Healthier Colorado Poll - November 2019

Education. What is the last grade or level of school you have completed? Read list if necessary

	Gender		Age 2		Age 4				Gender / Age				Colorado Regions					
	All Voters	Men	Women	18-49	50+	18-34	35-49	50-64	65+	Men 18-49	Men 50+	Women 18-49	Women 50+	Den/ Bldr/ Broom	Arap/ Jeff	Adam/ Doug/ Larm/ Weld	CO Sprng TV	*Full* Sample West Slope
Total Answering	500 100%	240 48%	260 52%	257 51%	243 49%	128 26%	129 26%	126 25%	117 23%	131 26%	110 22%	126 25%	133 27%	95 19%	112 22%	142 28%	83 17%	211 42%
Less than high school degree	1%	*%	1%	-	1%	-	-	2%	1%	-	*%	-	2%	-	1%	1%	1%	1%
High school graduate	10%	9%	11%	9%	10%	13%	5%	10%	10%	9%	8%	9%	12%	7%	11%	10%	4%	18%
Some college / 2 year degree / Associates degree	29%	30%	28%	26%	32%	32%	20%	29%	35%	29%	33%	24%	32%	20%	31%	29%	39%	25%
College graduate / BA or BS degree	37%	38%	36%	41%	32%	39%	43%	34%	30%	40%	35%	42%	30%	38%	33%	38%	34%	40%
Postgraduate courses / Masters or Doctoral degree	24%	23%	24%	23%	24%	16%	31%	25%	22%	22%	24%	24%	24%	32%	24%	23%	22%	16%
Don' t know / refused (Don' t read)	*%	*%	1%	*%	*%	-	1%	-	1%	-	*%	1%	1%	2%	-	-	-	*%

Healthier Colorado Poll - November 2019

Education. What is the last grade or level of school you have completed? Read list if necessary

	Have Children		Education		Education / Gender				Income			Health Insurance Provider			
	ALL VOTERS	Yes	No	Less Than BA	BA+	Men NoBA	Men BA+	Women NoBA	Women BA+	Less Than \$50k	\$50k up to \$100k	\$100k or More	Empl-oyer	Priv-ate	Medi-care
Total Answering	500 100%	175 35%	316 63%	197 39%	301 60%	94 19%	146 29%	103 21%	155 31%	88 18%	183 37%	178 36%	260 52%	64 13%	100 20%
Less than high school degree	1%	1%	1%	2%	-	*%	-	3%	-	1%	1%	*%	*%	-	1%
High school graduate	10%	9%	10%	24%	-	22%	-	27%	-	19%	9%	5%	8%	8%	10%
Some college / 2 year degree / Associates degree	29%	21%	35%	74%	-	78%	-	70%	-	39%	34%	17%	24%	30%	35%
College graduate / BA or BS degree	37%	39%	35%	-	61%	-	62%	-	60%	32%	39%	38%	40%	43%	28%
Postgraduate courses / Masters or Doctoral degree	24%	31%	20%	-	39%	-	38%	-	40%	9%	17%	39%	28%	19%	25%
Don' t know / refused (Don' t read)	*%	-	*%	-	-	-	-	-	-	-	-	-	*%	-	1%

Healthier Colorado Poll - November 2019

Income. Could you please tell me if your family's total income is? Read categories until they answer.

	PartyRegistration				Party Registration / Gender						Party Registration / Age						Ethnicity	
	All Voters	Democrat	Unaf/Other	Republican	Dem Men	Dem Women	Unaf Men	Unaf Women	Rep Men	Rep Women	Dem 18-49	Dem 50+	Unaf 18-49	Unaf 50+	Rep 18-49	Rep 50+	White	Hispanic
Total Answering	500 100%	157 31%	189 38%	148 30%	62 12%	95 19%	98 20%	91 18%	76 15%	73 15%	87 17%	70 14%	115 23%	74 15%	51 10%	97 19%	392 78%	48 10%
Under \$25,000	5%	4%	6%	6%	2%	5%	7%	5%	5%	9%	3%	5%	5%	7%	3%	8%	5%	8%
\$25,000 up to \$50,000	12%	16%	9%	12%	15%	16%	8%	9%	10%	14%	16%	15%	8%	9%	11%	12%	11%	12%
\$50,000 up to \$75,000	21%	26%	22%	15%	25%	26%	20%	24%	11%	20%	24%	28%	21%	22%	9%	19%	21%	20%
\$75,000 up to \$100,000	16%	18%	15%	14%	16%	19%	13%	17%	19%	10%	24%	11%	14%	17%	16%	13%	17%	16%
\$100,000 up to \$150,000	18%	15%	21%	19%	16%	14%	22%	21%	18%	20%	13%	17%	24%	17%	17%	20%	19%	20%
\$150,000 or more	17%	17%	16%	19%	17%	17%	19%	12%	20%	18%	17%	17%	19%	10%	24%	17%	17%	17%
Don't know / Not sure (Don't read)	2%	1%	2%	2%	2%	1%	4%	*%	4%	*%	2%	1%	3%	1%	6%	*%	2%	3%
Refused (Don't read)	8%	3%	10%	12%	7%	1%	7%	12%	14%	10%	2%	5%	5%	16%	13%	11%	8%	4%

Healthier Colorado Poll - November 2019

Income. Could you please tell me if your family's total income is? Read categories until they answer.

	Gender		Age 2		Age 4				Gender / Age				Colorado Regions					
	All Voters	Men	Women	18-49	50+	18-34	35-49	50-64	65+	Men 18-49	Men 50+	Women 18-49	Women 50+	Den/ Bldr/ Broom	Arap/ Jeff	Adam/ Doug/ Larm/ Weld	CO Sprng TV	*Full* Sample West Slope
Total Answering	500 100%	240 48%	260 52%	257 51%	243 49%	128 26%	129 26%	126 25%	117 23%	131 26%	110 22%	126 25%	133 27%	95 19%	112 22%	142 28%	83 17%	211 42%
Under \$25,000	5%	5%	6%	4%	7%	4%	4%	3%	11%	4%	6%	5%	7%	6%	4%	3%	7%	9%
\$25,000 up to \$50,000	12%	11%	13%	12%	12%	13%	11%	8%	17%	12%	10%	12%	15%	14%	7%	10%	15%	17%
\$50,000 up to \$75,000	21%	18%	23%	19%	22%	23%	16%	24%	21%	17%	19%	21%	26%	22%	29%	17%	17%	16%
\$75,000 up to \$100,000	16%	16%	16%	18%	14%	19%	16%	15%	12%	16%	16%	19%	12%	11%	18%	16%	18%	18%
\$100,000 up to \$150,000	18%	19%	18%	19%	18%	19%	18%	22%	14%	19%	19%	18%	17%	13%	19%	22%	21%	12%
\$150,000 or more	17%	19%	16%	20%	15%	8%	31%	20%	9%	21%	16%	19%	13%	20%	16%	23%	11%	14%
Don't know / Not sure (Don't read)	2%	3%	1%	3%	1%	6%	-	1%	1%	5%	1%	1%	*%	3%	1%	2%	2%	4%
Refused (Don't read)	8%	9%	8%	6%	11%	7%	5%	7%	15%	6%	12%	6%	10%	10%	7%	7%	9%	10%

Healthier Colorado Poll - November 2019

Income. Could you please tell me if your family's total income is? Read categories until they answer.

	Have Children		Education		Education / Gender				Income			Health Insurance Provider			
	ALL VOTRS	Yes	No	Less Than BA	BA+	Men NoBA	Men BA+	Women NoBA	Women BA+	Less Than \$50k	\$50k up to \$100k	\$100k or More	Empl-oyer	Priv-ate	Medi-care
Total Answering	500 100%	175 35%	316 63%	197 39%	301 60%	94 19%	146 29%	103 21%	155 31%	88 18%	183 37%	178 36%	260 52%	64 13%	100 20%
Under \$25,000	5%	1%	8%	8%	4%	6%	4%	10%	3%	31%	-	-	*%	5%	13%
\$25,000 up to \$50,000	12%	6%	16%	18%	8%	17%	7%	19%	9%	69%	-	-	7%	15%	19%
\$50,000 up to \$75,000	21%	17%	22%	27%	17%	23%	15%	31%	19%	-	57%	-	20%	26%	20%
\$75,000 up to \$100,000	16%	16%	15%	13%	17%	15%	16%	12%	18%	-	43%	-	18%	17%	11%
\$100,000 up to \$150,000	18%	25%	15%	12%	23%	15%	22%	10%	23%	-	-	52%	23%	15%	13%
\$150,000 or more	17%	29%	11%	8%	23%	10%	24%	6%	22%	-	-	48%	25%	11%	7%
Don't know / Not sure (Don't read)	2%	1%	2%	3%	1%	6%	1%	*%	1%	-	-	-	2%	4%	1%
Refused (Don't read)	8%	4%	10%	9%	7%	8%	10%	11%	5%	-	-	-	4%	7%	17%

Healthier Colorado Poll - November 2019

Children. Do you have any children age 19 or younger, or not?

	PartyRegistration				Party Registration / Gender						Party Registration / Age						Ethnicity	
	All Voters	Demo- crat	Unaf/ Other	Repub lican	Dem Men	Dem Women	Unaf Men	Unaf Women	Rep Men	Rep Women	Dem 18-49	Dem 50+	Una 18-49	Una 50+	Rep 18-49	Rep 50+	White	Hisp- anic
Total Answering	500 100%	157 31%	189 38%	148 30%	62 12%	95 19%	98 20%	91 18%	76 15%	73 15%	87 17%	70 14%	115 23%	74 15%	51 10%	97 19%	392 78%	48 10%
Yes, have children age 19 or younger	35%	34%	44%	26%	34%	33%	41%	48%	28%	23%	45%	20%	62%	17%	53%	11%	35%	40%
No, do not have any children age 19 or younger	63%	65%	54%	72%	62%	67%	59%	49%	69%	75%	52%	80%	37%	81%	44%	87%	64%	56%
Don' t know / refused (Don' t read)	2%	2%	2%	2%	4%	-	*%	3%	4%	1%	3%	-	2%	1%	3%	2%	2%	4%

Healthier Colorado Poll - November 2019

Children. Do you have any children age 19 or younger, or not?

	Gender		Age 2		Age 4				Gender / Age				Colorado Regions					
	All Voters	Men	Women	18-49	50+	18-34	35-49	50-64	65+	Men 18-49	Men 50+	Women 18-49	Women 50+	Den/ Bldr/ Broom	Arap/ Jeff	Adam/ Doug/ Larm/ Weld	CO Sprng TV	*Full* Sample West Slope
Total Answering	500 100%	240 48%	260 52%	257 51%	243 49%	128 26%	129 26%	126 25%	117 23%	131 26%	110 22%	126 25%	133 27%	95 19%	112 22%	142 28%	83 17%	211 42%
Yes, have children age 19 or younger	35%	34%	36%	54%	15%	41%	66%	28%	2%	51%	15%	56%	16%	35%	35%	40%	35%	24%
No, do not have any children age 19 or younger	63%	63%	63%	44%	83%	56%	32%	70%	97%	46%	84%	42%	83%	61%	62%	60%	65%	75%
Don't know / refused (Don't read)	2%	2%	1%	2%	1%	2%	2%	1%	1%	3%	1%	2%	1%	3%	3%	1%	-	1%



Healthier Colorado Poll - November 2019

Children. Do you have any children age 19 or younger, or not?

	Have Children		Education		Education / Gender				Income			Health Insurance Provider			
	ALL VOTRS	Yes	No	Less Than BA	BA+	Men NoBA	Men BA+	Women NoBA	Women BA+	Less Than \$50k	\$50k up to \$100k	\$100k or More	Empl-oyer	Priv-ate	Medi-care
Total Answering	500 100%	175 35%	316 63%	197 39%	301 60%	94 19%	146 29%	103 21%	155 31%	88 18%	183 37%	178 36%	260 52%	64 13%	100 20%
Yes, have children age 19 or younger	35%	100%	-	27%	41%	27%	39%	27%	42%	14%	31%	53%	49%	33%	4%
No, do not have any children age 19 or younger	63%	-	100%	72%	57%	72%	58%	73%	56%	86%	66%	47%	50%	65%	96%
Don't know / refused (Don't read)	2%	-	-	1%	2%	1%	3%	-	2%	-	3%	-	1%	2%	-

Healthier Colorado Poll - November 2019

Health Insurance. Which of the following best describes your primary health insurance? Read categories until they answer.

	PartyRegistration			Party Registration / Gender						Party Registration / Age						Ethnicity		
	All Voters	Democrat	Unaf/Other	Republican	Dem Men	Dem Women	Unaf Men	Unaf Women	Rep Men	Rep Women	Dem 18-49	Dem 50+	Unaf 18-49	Unaf 50+	Rep 18-49	Rep 50+	White	Hispanic
Total Answering	500 100%	157 31%	189 38%	148 30%	62 12%	95 19%	98 20%	91 18%	76 15%	73 15%	87 17%	70 14%	115 23%	74 15%	51 10%	97 19%	392 78%	48 10%
Employer provided health insurance	52%	56%	53%	47%	60%	53%	53%	54%	52%	41%	72%	36%	66%	34%	67%	36%	53%	50%
Private health insurance, paid for out of pocket	13%	11%	15%	11%	9%	13%	14%	17%	11%	10%	13%	8%	14%	17%	8%	12%	14%	6%
Medicare	20%	20%	15%	26%	19%	21%	15%	15%	21%	32%	1%	44%	3%	33%	3%	38%	20%	31%
Medicaid	4%	5%	5%	3%	6%	4%	6%	4%	4%	2%	6%	3%	4%	8%	4%	2%	4%	-
No health insurance, uninsured	4%	2%	5%	5%	4%	1%	7%	3%	1%	9%	3%	*%	6%	4%	9%	3%	3%	5%
Other	5%	5%	3%	7%	2%	6%	2%	4%	9%	5%	3%	6%	4%	1%	5%	8%	4%	5%
Don't know / refused (Don't read)	2%	1%	3%	2%	-	2%	3%	3%	2%	2%	-	3%	4%	3%	3%	2%	3%	3%

Healthier Colorado Poll - November 2019

Health Insurance. Which of the following best describes your primary health insurance? Read categories until they answer.

	Gender		Age 2		Age 4				Gender / Age				Colorado Regions					
	All Voters	Men	Women	18-49	50+	18-34	35-49	50-64	65+	Men 18-49	Men 50+	Women 18-49	Women 50+	Den/ Bldr/ Broom	Arap/ Jeff	Adam/ Doug/ Larm/ Weld	CO Sprng TV	*Full* Sample West Slope
Total Answering	500 100%	240 48%	260 52%	257 51%	243 49%	128 26%	129 26%	126 25%	117 23%	131 26%	110 22%	126 25%	133 27%	95 19%	112 22%	142 28%	83 17%	211 42%
Employer provided health insurance	52%	55%	50%	68%	35%	65%	71%	60%	8%	67%	39%	69%	32%	56%	60%	54%	51%	35%
Private health insurance, paid for out of pocket	13%	12%	14%	13%	13%	13%	13%	16%	9%	10%	14%	16%	12%	12%	6%	12%	14%	23%
Medicare	20%	18%	22%	3%	38%	2%	3%	8%	70%	4%	34%	2%	41%	18%	19%	21%	18%	24%
Medicaid	4%	5%	4%	5%	4%	6%	3%	4%	4%	5%	5%	4%	3%	4%	2%	3%	7%	6%
No health insurance, uninsured	4%	4%	4%	5%	2%	6%	4%	4%	1%	5%	3%	6%	2%	5%	4%	3%	4%	5%
Other	5%	4%	5%	4%	5%	5%	3%	5%	6%	5%	4%	4%	6%	4%	6%	4%	4%	7%
Don't know / refused (Don't read)	2%	2%	2%	2%	2%	2%	2%	3%	2%	4%	*%	1%	4%	1%	3%	3%	1%	1%

Healthier Colorado Poll - November 2019

Health Insurance. Which of the following best describes your primary health insurance? Read categories until they answer.

	ALL VOTRS	Have Children		Education		Education / Gender				Income			Health Insurance Provider		
		Yes	No	Less Than BA	BA+	Men NoBA	Men BA+	Women NoBA	Women BA+	Less Than \$50k	\$50k up to \$100k	\$100k or More	Empl -oyer	Priv -ate	Medi -care
Total Answering	500 100%	175 35%	316 63%	197 39%	301 60%	94 19%	146 29%	103 21%	155 31%	88 18%	183 37%	178 36%	260 52%	64 13%	100 20%
Employer provided health insurance	52%	73%	41%	43%	58%	46%	60%	39%	57%	20%	54%	71%	100%	-	-
Private health insurance, paid for out of pocket	13%	12%	13%	12%	13%	11%	12%	13%	14%	14%	15%	10%	-	100%	-
Medicare	20%	3%	30%	23%	18%	17%	18%	29%	17%	36%	17%	11%	-	-	100%
Medicaid	4%	4%	4%	8%	2%	10%	2%	6%	2%	13%	2%	2%	-	-	-
No health insurance, uninsured	4%	3%	4%	4%	4%	6%	3%	3%	5%	7%	3%	2%	-	-	-
Other	5%	4%	5%	7%	3%	7%	3%	8%	3%	6%	5%	4%	-	-	-
Don't know / refused (Don't read)	2%	1%	2%	3%	2%	3%	1%	2%	3%	4%	3%	-	-	-	-

Healthier Colorado Poll - November 2019

Ethnicity. Just to be sure we are representing everybody, do you happen to come from a Hispanic or Latino background? Do not read answer choices. If respondent says "no", ask: May I ask your race?

	PartyRegistration				Party Registration / Gender						Party Registration / Age						Ethnicity	
	All Voters	Demo- crat	Unaf/ Other	Repub lican	Dem Men	Dem Women	Unaf Men	Unaf Women	Rep Men	Rep Women	Dem 18-49	Dem 50+	Una 18-49	Una 50+	Rep 18-49	Rep 50+	White	Hisp- anic
Total Answering	500 100%	157 31%	189 38%	148 30%	62 12%	95 19%	98 20%	91 18%	76 15%	73 15%	87 17%	70 14%	115 23%	74 15%	51 10%	97 19%	392 78%	48 10%
Hispanic / Latino	10%	13%	9%	6%	16%	11%	6%	13%	3%	9%	15%	10%	10%	9%	5%	7%	-	100%
White	78%	76%	77%	84%	72%	78%	79%	75%	82%	86%	70%	82%	78%	76%	81%	85%	100%	-
Black / African American	3%	5%	5%	-	4%	5%	5%	4%	-	-	7%	1%	7%	1%	-	-	-	-
Asian	1%	1%	*%	1%	-	1%	-	*%	2%	-	1%	-	*%	-	2%	-	-	-
Native American / American Indian	1%	*%	2%	1%	-	*%	2%	1%	2%	*%	*%	-	1%	3%	1%	2%	-	-
Other (Don' t read)	4%	2%	3%	6%	2%	3%	3%	3%	7%	5%	4%	-	2%	4%	10%	4%	-	-
Don' t know / refused	3%	4%	4%	2%	7%	2%	4%	4%	3%	-	2%	6%	2%	8%	1%	2%	-	-

Healthier Colorado Poll - November 2019

Ethnicity. Just to be sure we are representing everybody, do you happen to come from a Hispanic or Latino background? Do not read answer choices. If respondent says "no", ask: May I ask your race?

	Gender		Age 2		Age 4				Gender / Age				Colorado Regions					
	All Voters	Men	Women	18-49	50+	18-34	35-49	50-64	65+	Men 18-49	Men 50+	Women 18-49	Women 50+	Den/ Bldr/ Broom	Arap/ Jeff	Adam/ Doug/ Larm/ Weld	CO Sprng TV	*Full* Sample West Slope
Total Answering	500 100%	240 48%	260 52%	257 51%	243 49%	128 26%	129 26%	126 25%	117 23%	131 26%	110 22%	126 25%	133 27%	95 19%	112 22%	142 28%	83 17%	211 42%
Hispanic / Latino	10%	8%	11%	11%	8%	8%	13%	4%	13%	10%	5%	12%	11%	9%	10%	9%	12%	6%
White	78%	78%	79%	75%	82%	79%	71%	85%	78%	75%	82%	76%	81%	72%	80%	84%	73%	84%
Black / African American	3%	3%	3%	6%	1%	5%	6%	2%	-	5%	1%	6%	1%	10%	3%	2%	1%	1%
Asian	1%	1%	1%	1%	-	1%	2%	-	-	2%	-	1%	-	1%	-	-	1%	1%
Native American / American Indian	1%	2%	1%	1%	1%	1%	1%	3%	-	1%	2%	1%	1%	3%	1%	-	-	2%
Other (Don' t read)	4%	4%	3%	4%	3%	5%	4%	3%	2%	5%	3%	4%	3%	3%	3%	2%	7%	4%
Don' t know / refused	3%	5%	2%	2%	5%	1%	2%	4%	6%	3%	7%	*%	4%	1%	3%	3%	6%	3%

Healthier Colorado Poll - November 2019

Ethnicity. Just to be sure we are representing everybody, do you happen to come from a Hispanic or Latino background? Do not read answer choices. If respondent says "no", ask: May I ask your race?

	ALL VOTRS	Have Children		Education		Education / Gender				Income			Health Insurance Provider		
		Yes	No	Less Than BA	BA+	Men NoBA	Men BA+	Women NoBA	Women BA+	Less Than \$50k	\$50k up to \$100k	\$100k or More	Empl -oyer	Priv -ate	Medi -care
Total Answering	500 100%	175 35%	316 63%	197 39%	301 60%	94 19%	146 29%	103 21%	155 31%	88 18%	183 37%	178 36%	260 52%	64 13%	100 20%
Hispanic / Latino	10%	11%	9%	9%	9%	9%	7%	9%	11%	11%	9%	10%	9%	5%	15%
White	78%	77%	79%	77%	79%	75%	80%	80%	79%	73%	82%	79%	79%	84%	77%
Black / African American	3%	4%	3%	3%	4%	5%	2%	1%	5%	3%	3%	4%	4%	3%	-
Asian	1%	1%	1%	1%	*%	1%	1%	2%	-	1%	1%	*%	1%	3%	-
Native American / American Indian	1%	1%	1%	2%	1%	2%	1%	2%	-	4%	1%	*%	1%	2%	-
Other (Don' t read)	4%	4%	3%	4%	3%	5%	3%	4%	3%	5%	1%	4%	3%	3%	3%
Don' t know / refused	3%	2%	4%	3%	4%	3%	5%	3%	2%	3%	3%	2%	2%	2%	5%

Healthier Colorado Poll - November 2019

Party Registration.

	PartyRegistration				Party Registration / Gender						Party Registration / Age						Ethnicity	
	All Voters	Democrat	Unaf/Other	Republican	Dem Men	Dem Women	Unaf Men	Unaf Women	Rep Men	Rep Women	Dem 18-49	Dem 50+	Unaf 18-49	Unaf 50+	Rep 18-49	Rep 50+	White	Hispanic
Total Answering	500 100%	157 31%	189 38%	148 30%	62 12%	95 19%	98 20%	91 18%	76 15%	73 15%	87 17%	70 14%	115 23%	74 15%	51 10%	97 19%	392 78%	48 10%
Democrat	31%	100%	-	-	100%	100%	-	-	-	-	100%	100%	-	-	-	-	30%	41%
Unaffiliated	38%	-	100%	-	-	-	100%	100%	-	-	-	-	100%	100%	-	-	37%	37%
Republican	30%	-	-	100%	-	-	-	-	100%	100%	-	-	-	-	100%	100%	32%	19%
Other	1%	-	-	-	-	-	-	-	-	-	-	-	-	-	-	-	1%	3%



Healthier Colorado Poll - November 2019

Party Registration.

	Gender		Age 2		Age 4				Gender / Age				Colorado Regions					
	All Voters	Men	Women	18-49	50+	18-34	35-49	50-64	65+	Men 18-49	Men 50+	Women 18-49	Women 50+	Den/ Bldr/ Broom	Arap/ Jeff	Adam/ Doug/ Larm/ Weld	CO Sprng TV	*Full* Sample West Slope
Total Answering	500 100%	240 48%	260 52%	257 51%	243 49%	128 26%	129 26%	126 25%	117 23%	131 26%	110 22%	126 25%	133 27%	95 19%	112 22%	142 28%	83 17%	211 42%
Democrat	31%	26%	36%	34%	29%	32%	36%	27%	31%	29%	22%	39%	34%	50%	32%	27%	24%	26%
Unaffiliated	38%	41%	35%	45%	30%	48%	41%	38%	22%	45%	35%	44%	26%	33%	46%	34%	41%	37%
Republican	30%	31%	28%	20%	40%	18%	22%	35%	45%	23%	41%	16%	39%	16%	21%	38%	32%	36%
Other	1%	2%	1%	2%	1%	2%	1%	*%	2%	2%	2%	1%	*%	1%	1%	2%	3%	1%

Healthier Colorado Poll - November 2019

Party Registration.

	Have Children		Education		Education / Gender				Income			Health Insurance Provider			
	ALL VOTRS	Yes	No	Less Than BA	BA+	Men NoBA	Men BA+	Women NoBA	Women BA+	Less Than \$50k	\$50k up to \$100k	\$100k or More	Empl-oyer	Priv-ate	Medi-care
Total Answering	500 100%	175 35%	316 63%	197 39%	301 60%	94 19%	146 29%	103 21%	155 31%	88 18%	183 37%	178 36%	260 52%	64 13%	100 20%
Democrat	31%	30%	32%	27%	34%	21%	29%	33%	39%	35%	38%	28%	34%	28%	32%
Unaffiliated	38%	48%	32%	36%	39%	37%	43%	34%	35%	31%	38%	39%	39%	45%	28%
Republican	30%	22%	34%	36%	25%	40%	26%	32%	25%	31%	24%	32%	26%	25%	39%
Other	1%	*%	2%	1%	1%	2%	2%	1%	1%	3%	*%	1%	1%	2%	1%